



ANNUAL REPORT 2015



JAKARTA CENTRE FOR LAW ENFORCEMENT COOPERATION
WWW.JCLEC.COM

Transmittal Statement

This 2015 Annual Report of the Jakarta Centre for Law Enforcement Cooperation (JCLEC) Foundation has been approved by the JCLEC Foundation Boards of Management and Supervisors.

JCLEC Board of Management

Soepartiwi
Police Brigadier General
Chair, Board of Management

James Stokes
Police Superintendent
Secretary, Board of Management

Rachmad Fudail
Police Brigadier General
Member, Board of Management

JCLEC Board of Supervisors

Andy Rachmianto
Indonesian Ministry of Foreign Affairs
Member, Board of Supervisors

Juliet Maric
Embassy of the United Kingdom
Member, Board of Supervisors

Bradley Armstrong
Australian Department of Foreign Affairs and Trade
Member, Board of Supervisors

Contents

Letter of Transmittal	2
Contents	3
Executive Directors' Foreword	4
About JCLEC	5
Foundation and Governance	8
Management	10
2015 Highlights	11
Partners and Sponsors	12
Indonesia	14
Australia	16
Bali Process RSO	19
Canada	20
Denmark	21
International Committee of the Red Cross (ICRC)	22
INTERPOL	23
Netherlands	24
New Zealand	25
United Nations Office on Drugs and Crime (UNODC)	26
United Kingdom	27
United States of America	29
Programs and Events	30
2015 Program and Event Data	42
Facilities and Services	44
Staff at JCLEC	51
List of acronyms	56
Independent Auditor's Report	58
JCLEC Contact Details	75



James Stokes
Police Superintendent



Soepartiwi
Police Brigadier General

EXECUTIVE DIRECTORS' FOREWORD

After over a decade of operation, the hitherto valuable and well-regarded Jakarta Centre for Law Enforcement Cooperation (JCLEC) is in the maturity stage of its lifecycle as a non-profit Foundation.

In a global security environment in which the relevance of multilateral support for the development of counter terrorism and transnational crime capacity continues to increase, a program of organisational renewal was commenced in September 2015 in order to ensure the JCLEC is prepared to meet the evolving needs of partners and sponsors. Therefore, in 2015, the Foundation asked itself; “What does the future of JCLEC excellence look like?”

To that end, JCLEC reform projects were commenced in the areas of strategic and operational policy and governance, long-term capital management planning, future business modelling, organisational culture and human resource management, and financial management. These projects were in part informed by a review of the recommendations contained in the Evaluation Report produced by Farsight (Social Science Dimensions) in July 2014 and funded by the Government of Denmark.

With a sound base of continued relevance, existing governance arrangements, a well-established reputation for delivery, and supportive relationships with partners and sponsors, the Foundation is confident of a successful outcome from this process of renewal; ensuring the JCLEC remains adaptable, flexible and innovative and retains high levels of support, in order to facilitate the second decade of the Foundation's activity.

Semarang, January 2016

About the Jakarta Centre for Law Enforcement Cooperation



The JCLEC supports the development of counter terrorism and transnational crime capacity and related professional networks in Indonesia, the South East Asian Region and more broadly.

The JCLEC was founded by the Governments of Indonesia and Australia and officially opened on 3 July 2004 by the President of the Republic of Indonesia, Her Excellency Ibu Hj. Megawati Soekarnoputri, in response to emerging security and transnational crime concerns in South East Asia and beyond. In 2005 the JCLEC was registered with the Indonesian Ministry for Law and Human Rights as a not-for-profit Foundation.

Members of the Indonesian National Police (INP), Australian Federal Police (AFP), Foreign Ministry of the Republic of Indonesia (KEMLU), Australian Department of Foreign Affairs & Trade (DFAT) and United Kingdom Foreign & Commonwealth Office are registered with that Ministry to perform Boards of Directors and managerial roles for the JCLEC Foundation. Legal obligations relating to the oversight and management of the Foundation attach to those persons as individuals under Indonesian law in addition to those attached to their Government agency positions. An INP and an AFP member carry out joint Executive Director roles; simultaneously performing executive functions in the management and administration of the not-for-profit organisation as well as performing roles on the Foundation's Board of Management.

In 2015 the major institutional partners of the JCLEC Foundation continued to be Indonesia and Australia, supported by the United Kingdom, Canada, Denmark, Bali Process Regional Support Office (RSO) and the Australian Institute of Police Management (AIPM).



Institutional partner contributions enable the JCLEC Foundation to manage 130 staff and the Foundation's two separate facilities, namely the secretariat office located within the Indonesian National Police (INP) National Headquarters (Mabes Polri) in Jakarta and the training and event complex located on a dedicated fifteen acre site within the grounds of the INP Commissioned Police Officer Academy (Akademi Kepolisian) in Semarang, Indonesia.

The JCLEC training and event complex has the capacity to concurrently facilitate eight separate training or other activities and accommodate 128 persons. Facilities include a Computer Based Training lab, an interactive simulation system (Hydra-Minerva) and spiritual and health facilities.

In 2015, the JCLEC training and event complex hosted 1,668 participants from 37 countries across 76 training and capacity building activities.

The JCLEC training and event complex facilitates activities at the request of individual sponsors, after approval by the JCLEC Foundation. JCLEC training and development sponsors provide funding, activity management, curriculum and subject matter expertise, whilst JCLEC provides facilities and services to enable the delivery of the sponsored activities.

In 2015 the training and development sponsors of JCLEC activities were Indonesia, Australia, Netherlands, United Kingdom, Denmark, Canada, New Zealand, United States of America, INTERPOL, Bali Process RSO, International Committee of the Red Cross (ICRC) and the United Nations Office on Drugs & Crime (UNODC). The JCLEC Foundation continued to monitor all training and development activities to ensure consistency with the themes of protection of human rights and gender equality, and to ensure such activities do not include 'use of force' training components. In addition to meeting a specific training or development need for the specific target audience, each sponsored activity conducted at the JCLEC also supports the maintenance and strengthening of the JCLEC as an institution from both capacity and capability perspectives.

In 2015 the JCLEC continued its partnership arrangements with the Bali Process RSO to support the strengthening of practical cooperation on preventing human trafficking and smuggling, and with the UNODC to facilitate access to their eLearning Management System (goLEARN). The JCLEC also commenced a partnership arrangement with the Centre for International Legal Cooperation to jointly implement a long-term INP institutional capacity development project to develop and implement a national curriculum on combatting transnational crime based on international best practices, funded by the Government of the Netherlands via the NUFFIC Netherlands Initiative for Capacity Development in Higher Education.

STRATEGIC VISION

Improve operational expertise of law enforcement personnel to lead, manage and investigate all forms of transnational crime including terrorism through shared learning and experience.

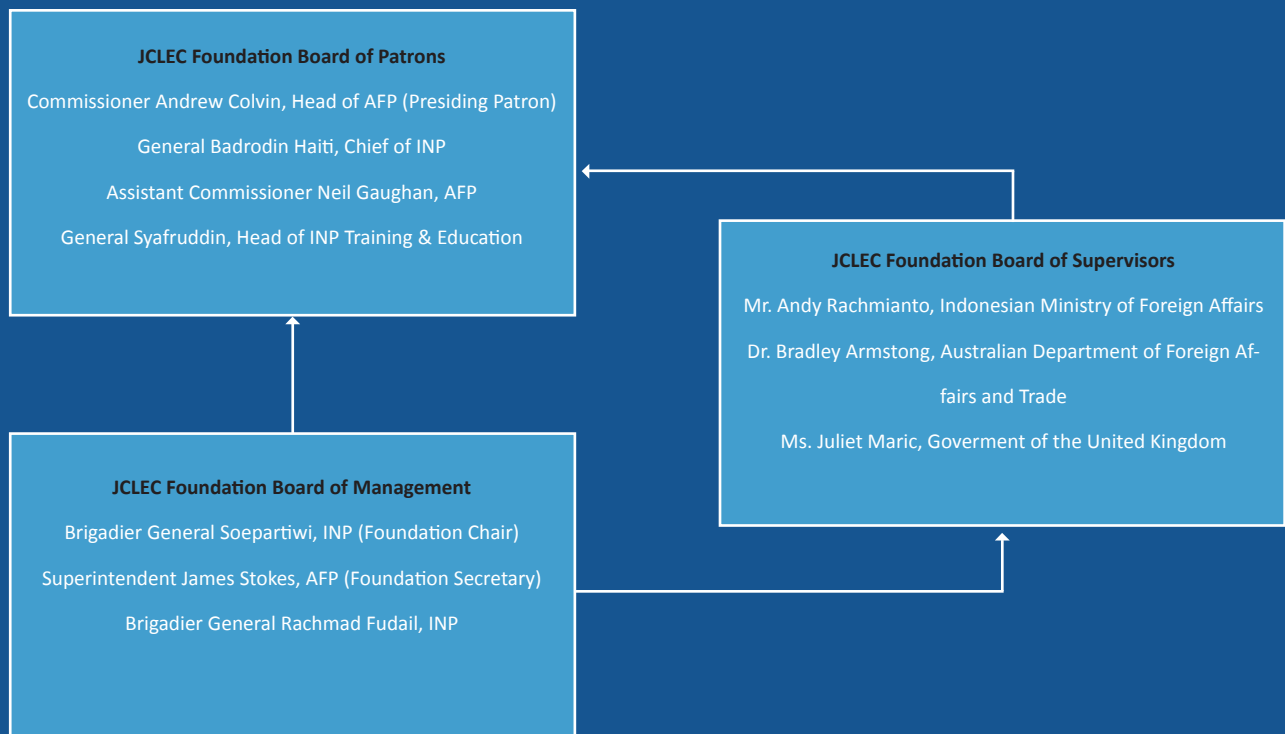
MISSION

Provide contemporary, focussed training to aid in the safety and security of Indonesia and countries with a desire to combat terrorism and all other forms of transnational crime. This will be achieved through the delivery of contemporary training programs that are tailored to the emerging training needs of the INP and regional law enforcement agencies.



Regional Counter Terrorism Investigations Management Course - 29 January 2015

JCLEC FOUNDATION AND GOVERNANCE



The JCLEC is a not-for-profit Foundation registered in the Republic of Indonesia. In accordance with Indonesian Foundation Law, the JCLEC was established by the Deed of Establishment of Yayasan Pusat Kerjasama Penegakan Hukum Jakarta (Jakarta Centre for Law Enforcement Cooperation Foundation) including the Articles of Association and is governed by three boards of governance:

- Board of Patrons
- Board of Management
- Board of Supervisors

Board of Patrons

The Board of Patrons consists of the respective heads of the Australian Federal Police (currently Commissioner Andrew Colvin) and Indonesian National Police (currently General Badrodin Haiti) together with two other senior officers from both police agencies.

The function of the Board of Patrons is to provide high-level oversight of the Foundation including: the appointment of members to the Boards of Management and Supervisors; granting approval of the Foundation's annual budget and work plan; ratifying the Foundation's annual report; and making any amendments to the Foundation's Articles of Association.

Throughout 2015 the Board of Patrons fulfilled their obligations as Board members via signed circular resolutions, submitted to the Republic of Indonesia's Ministry of Human Rights and Law.

Board of Management

The Board of Management is responsible for the general operation of the Foundation under delegated powers from the Board of Patrons. Membership consists of representatives from the Australian Federal Police and Indonesian National Police. In performing these roles, the Board of Management formulates policies and develops guidelines to ensure the highest quality of service is provided to guests of the Centre.

Key roles within the Board of Management include the Chair, Secretary and Treasurer, who are responsible for the overall governance and financial management of the Foundation and the operation of the Centre. The Board of Management met four times throughout 2015, in compliance with the Articles of Association.

Board of Supervisors

The Board of Supervisors continued the tradition of combining their quarterly meetings with the quarterly meetings of the Board of Management. This ensured both Boards were across all of the issues discussed, both at the day-to-day level and at the Government-to-Government level, including on current transnational crime issues.

The Board of Supervisors is made up of representatives from key multilateral partners including from the Ministries of Foreign Affairs of Australia and Indonesia as well as a representative from the Government of the United Kingdom, and official observers from the Government of the Kingdom of Denmark and the Indonesian National Police. The function of the Board of Supervisors is to supervise and provide advice to the Board of Management.

JCLEC MANAGEMENT

The management of the JCLEC is undertaken by members of the Australian Federal Police (AFP) and Indonesian National Police (INP), under the joint leadership of the JCLEC Executive Director and Board of Management Chair, Brigadier General Soepartiwi (INP) and Executive Director Programs and Board of Management Secretary, Superintendent James Stokes (AFP).

The INP and AFP officers deployed at JCLEC are assisted by a large team of civilian support staff who undertake a wide range of roles including:



GARDENING



BUILDING MAINTENANCE



CATERING



HOUSEKEEPING & LAUNDRY



IT SUPPORT



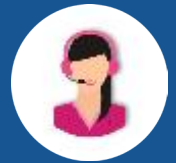
FINANCE



ADMINISTRATION



EVENT MANAGEMENT



TRANSLATING & INTERPRETING



CUSTOMER SERVICE



2015 HIGHLIGHTS

The 2015 year was another busy year for the JCLEC with a total of 76 activities attended by 1,668 participants.

July 2015

In July 2015 the JCLEC community farewelled Detective Superintendent Brian Thompson, JCLEC Executive Director Programs after 4 years of committed service to JCLEC and in his place welcomed Superintendent James Stokes.

October 2015

In October 2015, 35 staff working at JCLEC celebrated their 10th anniversary with JCLEC's Executive Directors.

December 2015

In December 2015 the JCLEC Executive Director and JCLEC Executive Director of Programs hosted a study-tour with General Syafruddin (Head of the INP Education and Training Institution) to the Australian Institute of Police Management and Barton College.

Additionally, over the course of the year JCLEC Semarang hosted a total of 187 official visitors over 53 separate visits, demonstrating the depth of continued interest in and relevance of JCLEC both domestically and internationally. Official visitors included:

- H.E. Miles Armitage – Australian Counter Terrorism Ambassador
- H.E. Dr. Trevor Matheson – New Zealand Ambassador for Indonesia
- General Police Badrodin Haiti – Chief of INP
- Commissioner Andrew Colvin – AFP Commissioner
- Commander General Police Budi Gunawan – Deputy Chief of INP
- Commissioner Roman Quaedvlieg – Australian Border Force Commissioner
- Commander General Police Syafruddin – Head of INP Education & Training Institution

Further information about the activities undertaken at the JCLEC in 2015 can be found on page 30 of this report.



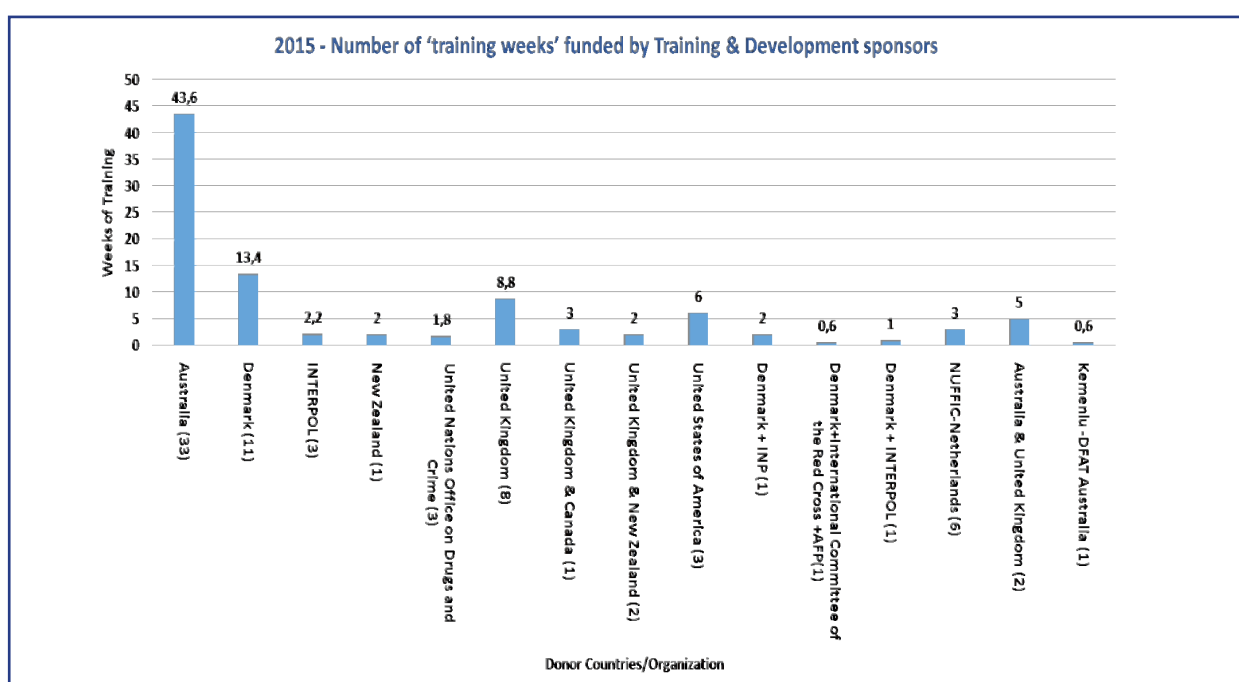
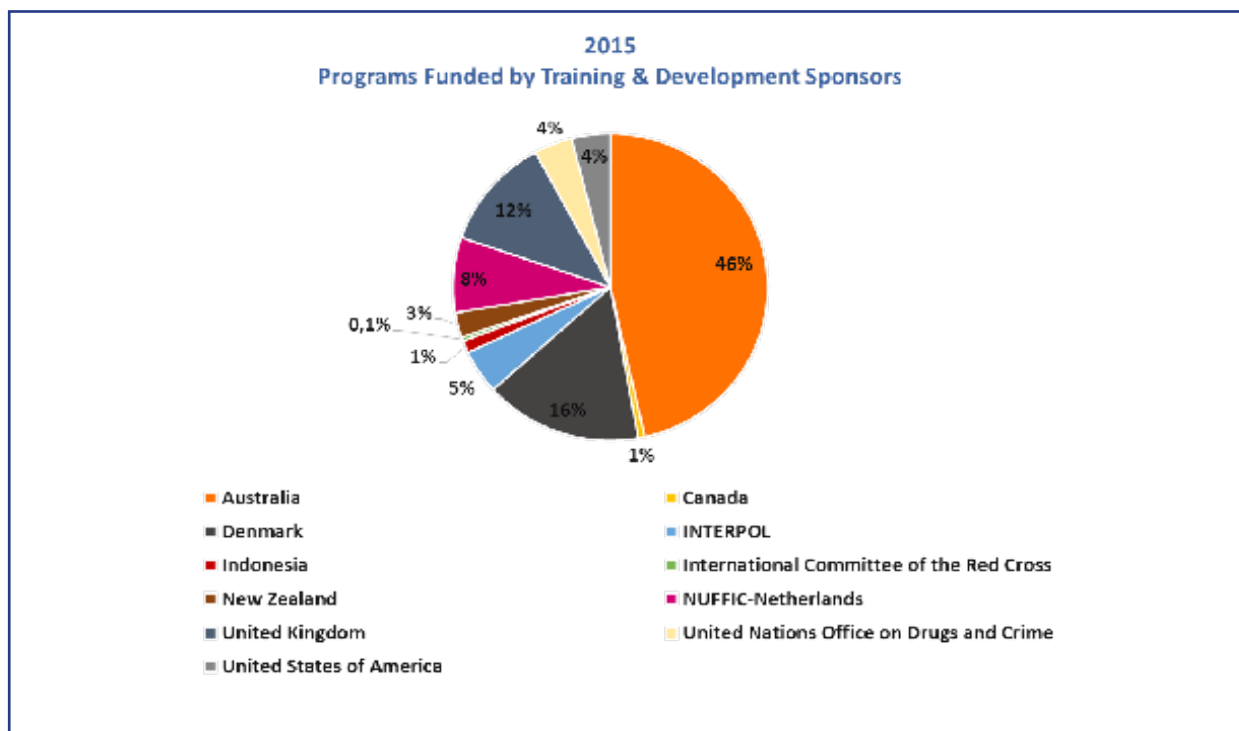
PARTNERS AND SPONSORS

The work of the JCLEC Foundation would not be possible without the contribution of institutional partners, who support the running of the JCLEC operations, and training and development sponsors who support activity management and delivery.

On 26 March 2015, twenty-five of JCLEC's partners and sponsors, representing 18 different organisations, met at JCLEC in Semarang for the 4th Annual JCLEC Donor Coordination Meeting to discuss and plan the training and development activities for the year. This event resulted in program collaboration and a reduction in duplication thereby enabling a more effective use of investment in law enforcement capacity building.

JCLEC thanks its partners and sponsors, each of whom are noted throughout the remainder of this section of the report, for their support of JCLEC and its work to pursue the Vision and Mission of the JCLEC.

TRAINING AND DEVELOPMENT SPONSORS



INDONESIA



Executive Director – Brigadier General Soepartiwi

Head of Education and Training - Senior Superintendent Eko Yuswanto

Head of General Affairs - Senior Superintendent Sulistiono

Chief Sub-unit of INP Trainers – Superintendent Gede Suardana

Chief Sub-unit of Administration and Security – Superintendent Widya A. Sejati

Chief Sub-unit of Maintenance - Assistant Superintendent Suwarno

Administrative Officer - Brigadier Rita Kartika

As the host country, the Republic of Indonesia, through the Indonesian National Police (INP), continues its institutional partnership in support of the Jakarta Centre for Law Enforcement Cooperation. As one of the bilateral founders of JCLEC, the INP contribution to the institution has been and remains significant in terms of:

- Operational management, via the ongoing placement of several INP staff to fulfill a variety of roles including Executive Director, Head of Education and Training and Head of General Affairs.
- Governance, through the involvement of the Chief of the INP and Head of the INP Training and Education Institution and other senior INP staff on the JCLEC Foundation Boards of Patrons, Management and Supervisors.
- Sequestering of land and buildings at the INP Police Academy in Semarang for the JCLEC training facility and the allocation of office space at INP Headquarters for the JCLEC Secretariat.
- In-kind financial support through the payment of utilities costs at the JCLEC Semarang site and Secretariat office.



Superintendent Gede Suardana - Senior Superintendent Eko Rudi - Brigadier General Soepartiwi
Senior Superintendent Sulistiono - Assistant Superintendent Suwarno - Superintendent Widya Anugerah

In addition to the training and development support provided by the INP officers deployed at JCLEC, in the 2015 year the INP facilitated the Government of Denmark-funded *Workshop on Development of SOPs on Psychology Therapy for Victims of Sexual Abuse and Family Disaster Victims*, which was attended by 42 participants, delivered the two (2) *Combatting Transnational Crime Management for District Commanders* programs attended by 44 participants (funded by the Government of Denmark and Australian Federal Police) and the AFP-funded *Financial Investigations Program* attended by 20 participants.

THE REPUBLIC OF INDONESIA MINISTRY OF FOREIGN AFFAIRS



The Republic of Indonesia Ministry of Foreign Affairs (KEMLU) partnered with the Australian Department of Foreign Affairs and Trade in 2015 to deliver the *Regional Workshop for Foreign Terrorist Fighters: Strengthening Legal Framework Workshop*, which was attended by 42 participants. Additionally, KEMLU supports the governance of the JCLEC Foundation through the placement of an official on the JCLEC Foundation Board of Supervisors, currently well served by Mr. Andy Rachmianto, Director for International Security and Disarmament Affairs, Ministry of Foreign Affairs.

AUSTRALIA



Executive Director Programs – Superintendent James Stokes

JCLEC Program Coordinator – Federal Agent Katrina Povolny

The Government of Australia, through the Australian Federal Police (AFP), continues to be the principle institutional partner and training and development sponsor at JCLEC. As one of the bilateral founders of JCLEC, the AFP contribution to the institution has been and remains significant in terms of:

- Operational management, via the ongoing placement of two AFP staff to fulfill the roles of JCLEC Executive Director Programs and JCLEC Program Coordinator.
- Governance, through the involvement of the AFP Commissioner and other senior AFP staff on the JCLEC Foundation Boards of Patrons and Management.
- Operational funding which, amongst other things, funds the provision of JCLEC civilian staff and maintains the functioning of the property and buildings.

In the 2015 year, as in previous years, the AFP funded the majority of programs at JCLEC, accounting for 28 programs with a total of 549 participants. This represents over 36% of all programs and in excess of 32% of all participants. Three (3) of the 2015 programs were collaborations with other Australian and international agencies, including the Australian Institute of Police Management (AIPM), Charles Sturt University, the Governments of the United Kingdom, Denmark, Canada, New Zealand and the International Committee of the Red Cross.



Integrated Media Awareness and Management Course - 21 January 2015

The aim of AFP training at JCLEC is to deliver a broad range of international law enforcement education programs, which assist with the ongoing development of the Indonesian National Police (INP) and other Indonesian and regional law enforcement agencies, so that they may successfully address transnational crimes which not only occur in their jurisdiction but also impact other countries.



International Cyber Crime Investigation Workshop - 27 November 2015

In addition to the support provided by the AFP, a number of other Australian Government departments and institutions also fund a range of training courses and programs at JCLEC. Over the 2015 year this included support from:



Australian Government
Attorney-General's Department

The Australian Attorney-General's Department funded three (3) programs with a total of 75 participants, including the Women in Law Enforcement program, which was hosted in December 2015.



Australian Government
Department of Foreign Affairs and Trade

The Department of Foreign Affairs and Trade (DFAT) funded 2 programs with a total of 66 participants, of which one was a collaboration with the Indonesian Ministry of Foreign Affairs (KEMLU). Additionally, DFAT supports the governance of the JCLEC Foundation through the placement of an embassy official on the JCLEC Foundation Board of Supervisors, currently well served by Dr. Bradley Armstrong, Minister-Counselor (Political and Public Diplomacy).

The Australian Border Force



The Australian Border Force funded the delivery of three (3) maritime courses with a total of 57 participants, including *Planning and Command: Vessel Search*, *Planning & Conduct of Maritime Patrols*, and *Vessel Search – Legal Systems and Command*.



The Australian Institute of Police Management



The Australian Institute of Police Management (AIPM) has been a long standing supporter of JCLEC's flagship program, the 3-week *Regional Executive Leadership Program*, which is a collaboration with the AFP and Charles Sturt University.

Bali Process RSO



The Bali Process on People Smuggling, Trafficking in Persons and Related Transnational Crime brings together 48 member States and organisations in the Asia Pacific Region. At the Fifth Bali Regional Ministerial Conference in 2013, Ministers highlighted the value of linking the Bali Process with the law enforcement training expertise of existing regional centres of excellence, which resulted in a partnership with JCLEC regarding the development of a program of cooperation and training to bring together law enforcement and immigration management experts to build the capacity of member States.

In October 2015 the JCLEC, together with the Bali Process Regional Support Office, co-hosted the Initial Meeting of Regional Centres of Excellence which encouraged strengthened regional collaboration and coordination of training activities.

CANADA



Canadian Resident Trainer - Staff Sergeant Julie Faucher

Canada's Department of Foreign Affairs, Trade and Development (DFATD), recently renamed Global Affairs Canada (GAC), commenced its support of JCLEC in 2006. Since then the Government of Canada has supported JCLEC institutional development through the placement of a senior Royal Canadian Mounted Police (RCMP) officer as a resident trainer at JCLEC. The position is funded under DFATD's Counter-Terrorism Capacity Building Program. Its strategy and objective are to enhance Canada's presence within South East Asia (SEA) by providing training assistance to Indonesian and SEA law enforcement officers. All training deliveries are focussed on supporting SEA counter-terrorism and human smuggling efforts in support of Canada's domestic, regional and international interests.

The Government of Canada has funded the delivery of 48 courses with 993 participants since 2006. In 2015, the Canadian Government, in partnership with the Government of the United Kingdom, delivered the 3-week *Regional Counter Terrorism Investigation Management* course, which was attended by 26 participants from across South East Asia. In addition, in partnership with the New Zealand and Australian Governments, the Canadian Government delivered an *Investigations Skills Training for People Smuggling Investigators* program attended by 25 participants.

DENMARK



The Government of Denmark, through its International Development Agency, DANIDA, and its Embassy in Jakarta, has been a training and development sponsor of JCLEC since 2004. Over the 11 years since first lending its support to JCLEC, the Government of Denmark has funded a total of 65 courses, which have been attended by 1,687 participants from across Indonesia, the Asia Pacific and South East Asia.

The Danish funding has and continues to provide JCLEC and the Indonesian National Police (INP) with flexible support to develop, design and implement programs that consider the specific needs of front line law enforcement, focussing on human rights, gender, and the protection of women and children. Additionally, the flexible funding provided to JCLEC by the Government of Denmark has also supported the institutional capability of JCLEC through the provision of computer equipment for JCLEC's Computer Based Training program, the commissioning of an independent evaluation report and most recently in 2015, to enhance the security of the JCLEC training facility in Semarang.

Over the 2015 year the Government of Denmark funded the delivery of (15) training courses with 374 participants. The training included five (5) *Disaster Victim Identification courses*, two (2) *Combatting Transnational Crime Management Programs for District Commanders*, two (2) *Economic Crime Investigations & Multi-Agency Cooperation Courses* as well as a *Deradicalization Program*, a *Modern & Methodology-based Learning Methodologies Workshop for Head of Police Schools in Indonesia* and *CBT Manager Training on goLEARN*. An additional three (3) of the courses were the result of collaborations with other international agencies including the Indonesian National Police, the New Zealand Police, the Australian Federal Police, Interpol, and the International Committee of the Red Cross.

International Committee of the Red Cross



ICRC

The International Committee of the Red Cross (ICRC) sponsored training at JCLEC for the first time in 2015. Co-funded by the ICRC, the Australian Federal Police (AFP), and the Danish Government, the purpose of the three (3) day International Committee of the Red Cross (ICRC) attendance at JCLEC was twofold: the ICRC held their *Regional Workshop on the Management of the Dead in Disasters* at the same time as the *Meeting of the Asia Pacific Medico Legal Association (APLMA)*. The events were attended by 45 participants from the Asia-Pacific Region, including representatives from governmental, regional and humanitarian organisations from Australia, Bangladesh, Cambodia, Fiji, India, Indonesia, Japan, Korea, Malaysia, Myanmar, Nepal, Papua New Guinea, the Philippines, Sri Lanka, Thailand, Timor Leste, and Vietnam.



INTERPOL



INTERPOL, the world's largest international police organisation, has been a JCLEC training and development sponsor since 2013. Over the last three years INTERPOL has funded 12 courses and workshops with a total of 267 participants.

Over the 2015 year INTERPOL funded the delivery of four (4) programs with 127 participants. These included: the *INTERPOL Capacity Building Program on Enhancing Migrant Smuggling Investigation in South East Asia*, the *3rd Project Pacific Working Group Meeting on the South East Asia Foreign Fighters Project*, the *INTERPOL South East Asia Foreign Fighters Project Final Working Group Meeting*, and a *Fisheries Crimes Investigation course*, which was funded through a grant from the United States Department of State's Bureau for International Narcotics and Law Enforcement Affairs and was a collaboration with the Government of Denmark.



INTERPOL SEA Foreign Fighters Project Class - April 2015

NETHERLANDS



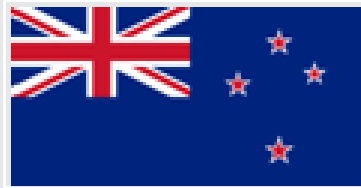
The Dutch Government has been a long standing and significant JCLEC institutional partner and training and development sponsor.

In 2005 the Netherlands funded the construction of the JCLEC villas and participant accommodation building which over the last 10 years has housed thousands of visiting trainers and tens of thousands of JCLEC participants. As a training and development sponsor the Dutch Government funded the delivery of 16 training programs between 2007 and 2011.

The partnership between the Netherlands and JCLEC has taken a more strategic direction in recent years. In 2014 JCLEC signed a 4-year funding agreement with the Centre for International Legal Cooperation (CILC) to partner in the delivery of a Nuffic-funded Netherlands Initiative for Capacity Development in Higher Education (NICHE) project called *Capacity building at JCLEC to develop and implement a National Curriculum on Combatting Transnational Crime based on International Best Practices*. The aims of the project are to use international best practice in the development of a standard national curriculum which is to be implemented in the INP Intelligence and CID Training Centre, using a system of blended learning and JCLEC's KERIS simulation methodologies.

This project represents an important strategic partnership for JCLEC and in 2015 several seminars and workshops were conducted to assist in the development of six national INP curricula and also included project management and training evaluation workshops for JCLEC staff.

NEW ZEALAND



The Government of New Zealand through the New Zealand Police first commenced their sponsorship of JCLEC training and development in 2008 with a jointly-funded *Counter Terrorism Seminar*. Since then New Zealand has funded exclusively or via partnerships with other agencies a total of 19 programs with 518 participants.

In 2015 New Zealand funded the delivery of three *Countering Violent Extremism* courses, which were attended by 59 participants. Two of the courses delivered in 2015 were collaborations with the United Kingdom.



UNITED NATIONS OFFICE ON DRUGS AND CRIME



The United Nations Office on Drugs and Crime (UNODC) has been a JCLEC training and development sponsor since 2011, funding a total of 11 programs with 206 participants. Additionally, between 2010 and 2013 the UNODC managed, on behalf of the European Commission and in collaboration with a number of other partner agencies, the *Transnational Crime and Criminal Justice Project*. This project contributed significantly to the JCLEC institution through the placement of several training and development staff at JCLEC, and amongst other things contributed to the improved capacity of JCLEC trainers and delivered a total of 65 programs with over 2,546 participants.

Throughout 2015 the UNODC, in partnership with the European Union, implemented a long-term capacity building program at JCLEC to strengthen Indonesia's capabilities to counter terrorist financing, in line with the international commitments and standards including the United Nations Security Council Resolutions (UNSCRs) and the recommendations of the Financial Action Task Force (FATF). Through Train-the-Trainers programs, four training courses were delivered to almost 50 officials from various Indonesian government agencies. Ten of these participants completed a training course to become national trainers for basic courses on countering the financing of terrorism.

Additionally, via their Global eLearning Program the UNODC continued to support JCLEC's Computer Based Training (CBT) in 2015. Three (3) goLearn servers were provided to upgrade the current offline Computer Based Training (CBT) into the online goLearn system. New bilingual modules were also uploaded enabling future JCLEC participants to access the latest goLearn modules through this web-based e-learning platform.

UNITED KINGDOM



The Government of the United Kingdom commenced its support of JCLEC in 2005 and continues to be a significant contributor, both as an institutional partner and a training and development sponsor.

In support of the JCLEC institution the United Kingdom funded a resident police trainer at JCLEC between 2005 and 2014 and more recently has funded a JCLEC-based local liaison officer. The local liaison officer assists the UK Counter Terrorism Liaison Officer for South East Asia, DCI Ewan Kindness, in coordinating and overseeing the UK training program at JCLEC. Additionally, the United Kingdom supports the governance of the JCLEC Foundation through the placement of an embassy official on the JCLEC Foundation Board of Supervisors, currently well served by Ms. Juliet Maric, Deputy Head of Mission Jakarta.

As a JCLEC training and development sponsor for over 10 years, the Government of the United Kingdom has funded and delivered a total of 101 training courses at JCLEC which have been attended by 1,804 participants from Indonesia and South East Asia.

The purpose of the UK-JCLEC police capacity building is to provide a comprehensive package of counter terrorism training courses primarily for police officers in Indonesia and the South East Asia region, and to strengthen the strategic management, investigative and intelligence gathering capabilities of counter terrorism agencies.

Over the 2015 year the United Kingdom delivered eleven (11) training courses with 263 participants. The training focussed primarily on counter terrorism and included courses such as *Prison Intelligence*, *Countering Violent Extremism*, *Counter Terrorism Investigation Management*, *Prison Debriefing* and *South East Asia Regional Ports Intelligence*. Four (4) of the courses were the result of collaborations with other international agencies including the New Zealand Police, the Australian Federal Police and the Royal Canadian Mounted Police.



Countering Violent Extremism - 3 December 2015

UNITED STATES OF AMERICA DEPARTMENT OF STATE ANTI-TERRORISM ASSISTANCE PROGRAM



The Government of the United States of America (USA), through the Department of State Anti-Terrorism Assistance Program, has been a JCLEC training and development sponsor since 2013 having sponsored a total of 19 programs with 582 participants.

Over the 2015 year the USA Anti-Terrorism Assistance Program sponsored two (2) *Terrorist Crime Scene Investigation* courses, attended by a total of 49 participants, as well an *Identifying & Developing Investigative Information* course, which was attended by 20 participants.



Terrorist Crime Scene Investigation - 31 March 2015

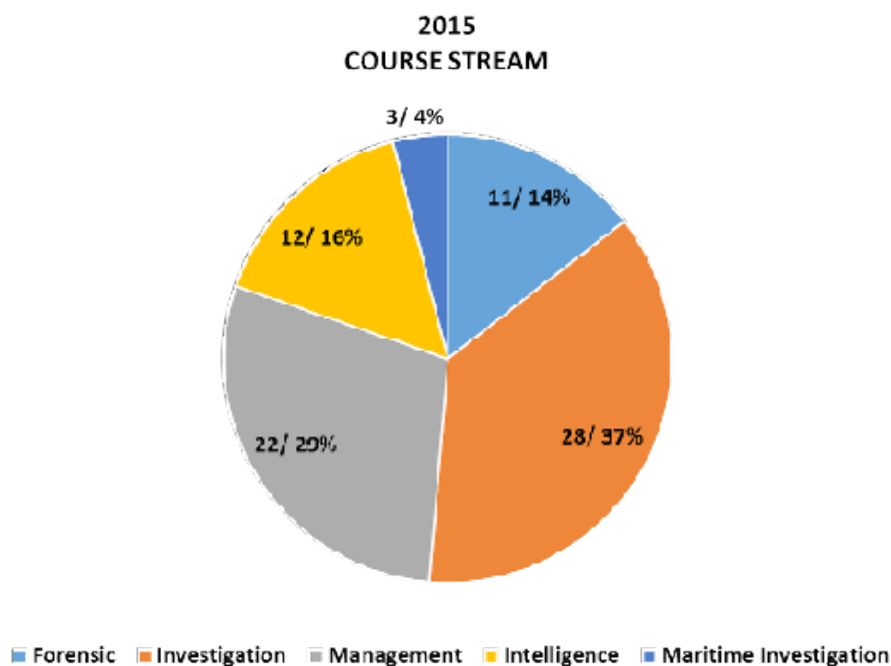
PROGRAMS AND EVENTS

All programs delivered at JCLEC are developed in consultation with the Indonesian National Police (INP), which seeks to provide training based on the Chief of the INP's strategic directive, the INP yearly training needs assessment and partner law enforcement aid program objectives. Consequently, JCLEC is required to meet a number of obligations and reporting requirements.

Training held at JCLEC is based on capacity building and high level programs across all transnational crime types (many of which overlap) and are broadly categorised into the streams of:



JCLEC also hosts other events such as conferences and meetings and a total of seventy-six (76) programs and events, attended by 1,668 participants, were held at JCLEC during 2015.



STREAM 1: INVESTIGATION

JCLEC facilitates training in conducting investigations in various specialist crime types. This builds on the basic investigative training provided at the recruit/academy level, and includes:

- a. Counter Terrorism;
- b. Child Exploitation;
- c. Cyber;
- d. Economic/Financing;
- e. People Smuggling; and
- f. Narcotics.

During 2015 a total of 43 programs were held relating to this stream with 984 participants.

a. Counter Terrorism

Various aspects of countering terrorism is trained at JCLEC including Countering Violent Extremism, Financing, Intelligence and Investigation as a result of the increased challenges law enforcement and communities face regarding foreign terrorist fighters in conflict zones and in their home countries.



Pre/Post Blast Investigation Management - 6 January 2015

The 24 counter terrorism programs hosted at JCLEC in 2015 were:

2015 Dates	Training Title	Delivered	Funded	Participants
13 - 15 January	Advanced CT UNSCR Training Workshop	UNODC	UNODC	18
14 - 23 January; 27 May - 5 June	2 x Pre/Post Blast Investigation Management	AFP & INP	AFP	21 25
19 January - 6 February	Regional Counter Terrorism Investigations Management Course	UK & Canada	UK & Canada	26
9 - 13 February; 23 - 27 March; 10 - 21 August; 30 Nov. – 11 Dec.	4 x Countering Violent Extremism	UK & NZ UK & NZ NZ UK	UK & NZ UK & NZ NZ UK	19 20 20 25
10 - 13 February	Prisons Conference	Combina- tion	AGD	24
23 - 27 February	Deradicalisation Program	Indonesia	Denmark	24
2 - 5 March; 9 - 12 March	2 x CT Prisons Intelligence Workshop	UK	UK	37 34
16 - 27 March; 30 Mar. - 10 April	2 x Terrorist Crime Scene Investigation	US	US ATA	25 24
25 - 27 March	Train the Trainer Course on Countering the Financing of Terrorism	UNODC	UNODC	10
28 - 30 April	South East Asia Foreign Fighters Project – 3 rd Working Group Meeting	Interpol	Australia & Various	40
26 - 29 May	Foreign Terrorist Fighters: Strengthening Legal Frameworks	Various	Indonesia & Australia	42
27 - 31 July	Terrorism Financing Analysis Workshop	AFP	AFP	11
27 July - 7 August, 19 - 30 October	2x Counter Terrorism Investigation Management	UK	UK	24 20
1 - 4 September	Basic Training Course on Countering the Financing of Terrorism	UNODC	UNODC	18
5 - 16 October	Prison Debriefing/Human Source	UK & AFP	UK & AFP	14
6 - 8 October	South East Asia Foreign Fighters Project – Final Working Group Meeting	INTERPOL	Australia & Various	39
9 - 13 November	South East Asia Regional Ports Intelligence (CT)	UK	UK	30
Total				590

b. Child Exploitation

The investigation into child exploitation requires sensitivity and a high level of awareness. These programs provide an awareness of joint-agency and multi-jurisdiction investigations, case management principles and an awareness of the transnational child sexual exploitation environment and offences. The practicalities of evidence handling, and treatment and interviewing of vulnerable witnesses were also included.

During 2015 the following three child exploitation training courses were hosted at JCLEC:

2015 Dates	Training Title	Delivered	Funded	Participants
23 Feb. - 6 March; 15 - 26 June	2 x Transnational Child Exploitation Investigations Program	AFP	AFP	20 18
14 - 18 September	Development of Therapy SOP for Victims of Child Sexual Abuse	INP	INP & Denmark	42
Total				80



Transnational Child Exploitation Investigations Workshop visit to AKPOL Primary School - 16 February 2015

c. Cyber Crime

As a result of increased use of online media to facilitate and promote the activities of extremist individuals and groups in Indonesia and the region, law enforcement are faced with unique challenges with the collection of electronic information and evidence in support of investigations. Additional challenges are faced with the introduction of electronic evidence into the prosecutorial process particularly as it relates to new and emerging technologies.

Having received the skills, participants of the AFP funded programs are given a toolkit of applications to practically apply and share in the workplace.

There were eight (8) cyber crime courses delivered at JCLEC in 2015:

2015 Dates	Training Title	Delivered	Funded	Participants
19 - 30 January	Cyber Crime Investigations & Internet Forensic Training	AFP	AFP	20
16 - 27 March	Cyber Crime Course	UK	UK	14
13 - 24 April; 23 Nov. - 4 Dec.	2 x International Cyber Crime Investigations Workshop	AFP	AFP	25 21
3 - 14 August	Cyber Crime Investigations Workshop	AFP	AFP	20
14 - 18 Sept.; 30 Nov. - 11 Dec.	2 x Cyber Exploitation & Social Media Analysis Workshop	AFP & AGD	AGD	13 16
19 - 23 October	Advanced Cyber Crime Investigations Workshop	AFP	AFP	14
Total				143



Cyber Crime Investigations Course - 16-27 March 2015

d. Economic and Financial Crime

Following the money trail identifies the source and destination of funding of many crime types and plays a critical role in money laundering. These courses provide knowledge on managing large scale economic crimes from investigation to prosecution, including asset tracking, international cooperation, functions of the Financial Intelligence Unit (PPATK) and encourages participants to exchange experiences to identify best practices.

The three (3) programs conducted were:

2015 Dates	Training Title	Delivered	Funded	Participants
12 - 16 January; 29 June – 3 July	2x Economic Crime Investigation & Multi Agency Cooperation Course	Denmark	Denmark	20 20
20 – 30 April	Financial Investigations Program	INP	AFP	20
Total				60

e. People Smuggling

It is recognised that there is a need for increased international cooperation in this field in particular between countries that engage in people smuggling investigations as source, transit and destination countries. Australia, Canada and New Zealand formed a tri-lateral strategic partnership to co-fund and present *People Smuggling Investigations Programs* in order to build regional police capacity to investigate people smuggling offences.



goLearn activities of Investigation Skills Training for People Smuggling Investigations - 4 June 2015

The four (4) programs in 2015 addressing people smuggling were:

2015 Dates	Training Title	Delivered	Funded	Participants
19 - 30 January	Capacity Building Program on Enhancing Migrant Smuggling Investigations in South-east Asia	INTERPOL	INTERPOL	18
9 - 20 March; 1 - 12 June	2 x Investigation Skills Training for People Smuggling Investigations	AFP, Canada & NZ	AFP	26 22
2 - 6 November	People Smuggling Investigation Workshop	AFP	AFP	24
Total				90

f. Narcotics

The *Advanced Narcotics Investigations Workshop* was attended by mid-level investigators from law enforcement agencies from Indonesia, Malaysia and the Philippines. This program explored the current trends and methodologies relating to drug trafficking throughout the region both from the trainers and participant's perspective. The workshop focussed on conducting joint investigations, particularly those which were multi-jurisdictional and multi-agency.

2015 Dates	Training Title	Delivered	Funded	Participants
21-29 May	Advanced Narcotics Investigations Workshop	AFP	AFP	21
Total				21



Advanced Narcotics Investigations Workshop - May 2015

STREAM 2: LEADERSHIP AND MANAGEMENT

Managing transnational crimes across borders is challenging and exercising leadership in this forum increases that challenge.

The Regional Executive Leadership Program (RELP) is a JCLEC flagship program which is strategic and developed through a collaborative approach between the INP, AFP, the Australian Institute of Police Management, the College of Policing in the United Kingdom, and Charles Sturt University, Australia. Focussing on the emerging law enforcement issues of foreign terrorist fighters, twenty four (24) participants from across the ASEAN region and beyond developed personal, organisational and regional leadership skills through activities such as preparing a major research paper focussed on the leadership challenges in countering terrorism and foreign terrorist fighters.

A total of four (4) Leadership and Management programs were held at JCLEC in 2015:

Dates in 2015	Training Title	Delivered	Funding	Participants
20 - 22 January	Integrated Media Awareness/ Management	AFP	AFP	26
9 - 13 March; 3 - 7 August	2 x Combatting Transnational Crime Management for District Commanders	INP INP	AFP Denmark	24 20
24 August - 11 September	Regional Executive Leadership Program	Multi	AFP	25
Total				95

“Congratulations to JCLEC. It is a very good course for the future leaders.”
ASP Khairul Azwan Selihudin
(Royal Malaysia Police)

“All round fantastic course with enthusiastic presenters.
Networking opportunity was amazing.”
Federal Agent Peter Brindal, AFP

STREAM 3: INTELLIGENCE

Intelligence plays a key role in investigations. Developing skills in applying the various stages of the Intelligence Cycle, identifying and using resources, planning and identifying the various sources of information are all key to undertaking the role of Intelligence.

A total of nine (9) Intelligence programs were held in 2015 at JCLEC:

Dates in 2015	Training Title	Delivered	Funding	Participants
2 - 13 February	Intelligence Analysis Program	AFP	AFP	20
3 - 5 March	Outlaw Motorcycle Gang Awareness Program	AFP	AFP	22
13 - 17 April; 25 - 29 May	2 x Basic Criminal Intelligence Course	AFP	AFP	12 12
20 - 24 April	Human Source Management	AFP	AFP	12
4 - 8 May	Advanced Human Source Management	AFP	AFP	11
1 - 12 June	Identifying & Developing Investigative Information	US	US ATA	20
16 - 20 Nov.; 23 - 27 Nov.	2 x Surveillance Photography Workshop	AFP	AFP	15 10
Total				134



Intelligence Analysis - 3 February 2015

STREAM 4: FORENSICS

Developing the Indonesian Disaster Victim Identification (DVI) capability has been a focus of JCLEC since it began in 2004 and during 2015 JCLEC hosted five (5) programs which were all funded by the Government of Denmark. The capability of the Indonesian DVI teams continues to be recognised in the international forum.

The following five (5) forensics programs were hosted at JCLEC in 2015:

Dates in 2015	Training Title	Delivered	Funding	Participants
2 - 13 February	6 th International DVI Management Course for DVI Province Commanders	INP	Denmark	20
2 - 13 March	8 th International DVI & Mortuary Management Course	INP	Denmark	20
7 - 10 April	3 rd International DVI Basic Training	INP	Denmark	21
3 - 14 August	7 th International Dental DVI Management & Forensic Dentistry Course	INP	Denmark	20
7-11 December	5 th International DVI Commanders Workshop	INP	Denmark	22
Total				103



STREAM 5: MARITIME

On 25 August 2015, Australian Border Force (ABF) Commissioner Roman Quaadvlieg attended JCLEC to open the *Planning and Conduct of Maritime Patrols* program. This opening coincided with the formal introduction of the Maritime Enforcement stream at JCLEC.

The Maritime Enforcement stream is the result of an agreed partnership between ABF and JCLEC and has a focus on delivering maritime law enforcement training to officers from Indonesian and regional authorities.

A total of four (4) maritime programs were held during 2015 as follows:

Dates in 2015	Training Title	Delivered	Funding	Participants
20 - 24 April	Planning and Command: Vessel Search	ABF	ABF	19
3 - 7 August	Fisheries Crimes Investigation	INTERPOL	INTERPOL & Denmark	30
25 August - 3 September	Planning and Control of Maritime Patrols	ABF	ABF	18
2 - 6 November	Vessel Search – Legal, Systems & Command	ABF	ABF	20
Total				87



Planning & Command Vessel Search - 21 April 2015

OTHER EVENTS

During 2015 JCLEC hosted other events which included, amongst other things, JCLEC training for staff to develop organisational capacity. It also held meetings and events relevant to the NUFFIC project which focusses on the development of Transnational Crime Curriculum for the Indonesian National Police.

A total of 11 other events took place during 2015:

Dates in 2015	Training Title	Delivered	Funding	Participants
26 March	Donor Coordination Meeting	JCLEC	JCLEC	21
27 - 28 April	KERIS Workshop	JCLEC	NUFFIC	10
10 - 11 June	NICHE IDN 222 Steering Committee	MULTI	NUFFIC	9
22 - 26 June	Modern and Technology-Based Learning Methodologies Workshop for Head of Police Schools in Indonesia	INP	Denmark	28
9 - 11 September	CBT Manager Training on goLearn	INP	Denmark	22
21 - 23 September	International Committee of the Red Cross (ICRC) Regional Workshop on the Management of the Dead in Disasters and Asia Pacific Medico Legal Association Meeting	ICRC	ICRC, Denmark, JCLEC & AFP	41
1 - 4 December	Curriculum Development	NUFFIC	NUFFIC	21
7 - 11 December	Women in Law Enforcement Conference	MULTI	AGD	49
9 - 11 December	Project Management	NUFFIC	NUFFIC	20
11 December	Steering Meeting Project	NUFFIC	NUFFIC	6
14 -16 December	Monitoring and Evaluation	NUFFIC	NUFFIC	38
Total				265

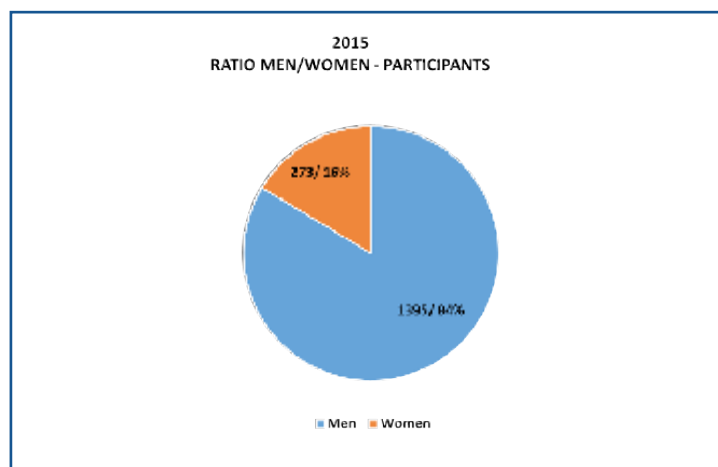
"I leave having been enriched, with new philosophies, strategies and behaviours. I also leave here with many, many more friends and networks, something that I would not have been able to replicate without this course and the JCLEC facility. I appreciate being selected for this course and know that it will benefit me for many years to come."

Federal Agent Tim Jolly, AFP

2015 PROGRAM AND EVENT DATA

RATIO OF MALE AND FEMALE PARTICIPANTS

It is an objective of JCLEC's to ensure that at least 10% of all program participants are female. In 2015 JCLEC, with the assistance of the INP's Human Resources Department, continued to exceed this benchmark with female participation at 16%.



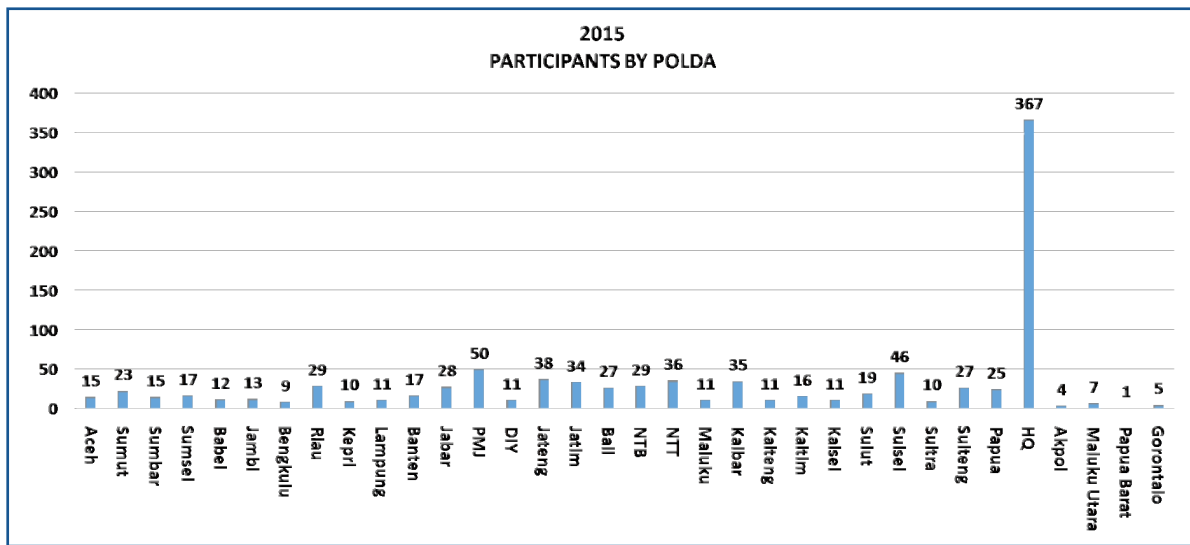
RATIO OF INDONESIAN AND INTERNATIONAL PARTICIPANTS

In 2015, with the assistance of its training and development sponsors, 80% of all participants at JCLEC were Indonesian, in line with the benchmark that JCLEC works towards. Of the total 1,668 participants in 2015, 91% (or 1,515) were from the ASEAN region, with the remaining 9% coming from 24 different countries.

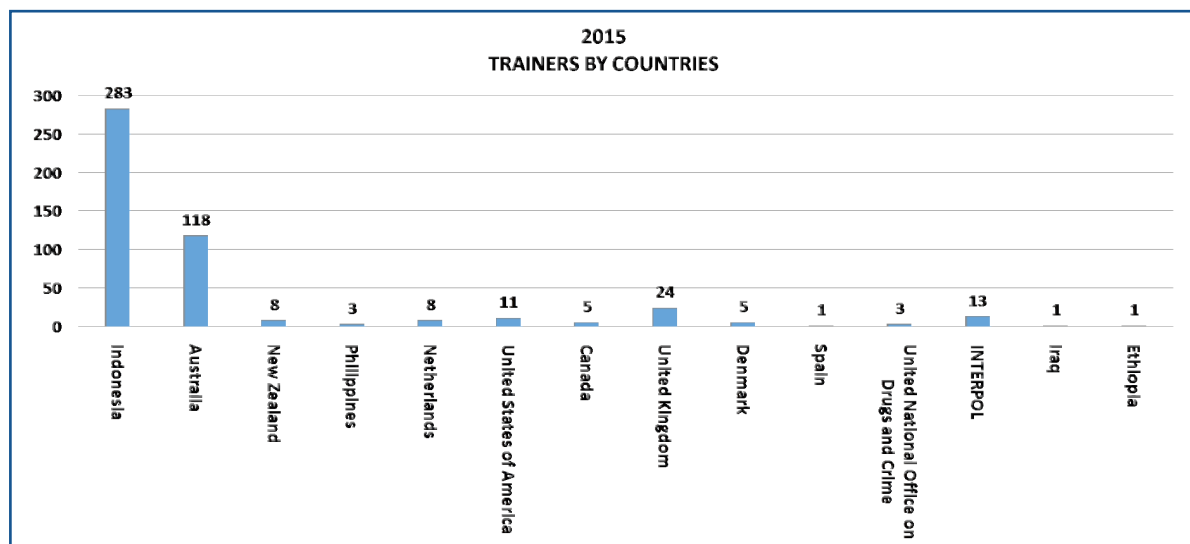


PARTICIPANTS BY POLDA

Indonesia covers a large geographic area with many remote provinces. A shared objective of the Indonesian National Police (INP) and JCLEC is to ensure that INP officers from all of Indonesia's provinces have an opportunity to partake in the learning and networking that JCLEC facilitates. The graph below demonstrates that. While many participants originated from INP Headquarters in Jakarta, there was a spread of participation from the other Indonesian provinces.



TRAINERS BY COUNTRY



JCLEC FACILITIES AND SERVICES

The JCLEC training centre is located within the 150-hectare grounds that make up the Indonesian National Police Academy (AKPOL) in Semarang, Central Java. Just a 50 minute flight from Jakarta, the expansive 15 acre grounds of the JCLEC training centre provide a quiet, safe and comfortable environment for learning and reflection.

In partnership with a variety of international and domestic training sponsors, JCLEC facilitates a range of training and capacity building programs to enhance the operational expertise of regional law enforcement personnel in combatting all forms of transnational crime.

PROGRAM AND TRAINING FACILITIES

JCLEC is a purpose-built law enforcement training centre comprising seven (7) fully equipped training rooms, ten (10) syndicate/break out rooms, a state-of-the art multi-media simulation centre (for specialist scenario-based training) and a modern computer-based training centre, which offers 78 self-paced learning modules on a range of transnational crime topics. The Centre also has a Library/Resource room and Musholla, both of which are available for use by staff, trainers and participants.

Each of the training rooms is equipped with a range of multi-media technologies and can host between 20 – 30 participants.



AUDITORIUM AND CONFERENCE FACILITIES

Meetings and conferences for up to 40 people can be hosted in JCLEC's large multipurpose room. The room contains an overhead projection system and flat screen monitors strategically placed around the walls to allow all participants to observe presentations. The room also has a small administrative/secretariat room should organisers wish to bring their own support staff.

The JCLEC Auditorium features a tiered 75-seat theatre with an audio-visual system. The room is used for multi-program official openings and closings ceremonies as well as for large regional and international conferences and keynote addresses.



COMPUTER BASED TRAINING FACILITY

The Computer Based Training (CBT) room is the result of cooperation between JCLEC and the UNODC. There are 78 transnational crime training modules such as anti-human trafficking, anti-money laundering, drugs identification, intelligence, to name a few.

CBT training is designed for participant self-study. This training is aimed at supporting the main training conducted in JCLEC and some modules are prerequisites to some JCLEC training programs. This learning system enables participants to study individually without feeling afraid of making mistakes or being limited by time. The participants can redo the subjects and tests, as well as learn new modules based on the participant's interest. Having passed the modules, participants will receive certificates which are recognized internationally.

CBT training programs are considered a very efficient means of self-learning and JCLEC has assisted in establishing another 12 CBT centres in various Polda's across Indonesia giving regional INP personnel access to basic knowledge on transnational crimes.



SIMULTANEOUS INTERPRETING

The JCLEC team of translators and interpreters enables course content (both written and spoken) to be delivered in up to five different languages. Recently acquired simultaneous translation equipment* enables immediate interpreting to be provided to participants and presenters, thereby improving communication flow and increasing the amount of content that can be communicated over the duration of an event.

* Thanks to funding in 2014 from the Government of Canada.

KERIS FACILITY

JCLEC is proud to house and operate an immersive simulation suite equipped with supporting facilities such as documented scenarios, video and audio recordings. This system provides opportunities for students to practice time critical decision-making in a live and real process of critical incident management, investigations and operations. The immersive simulation suites are named KERIS, an acronym, broadly translated from Bahasa Indonesia to mean Collaboration, Education, Reality, Immersive and Simulation.

KERIS refers to a combination of software, technology and classroom teaching developed by UNODC (United Nations Office on Drugs and Crime) and in collaboration with the NPIC (National Policing Improvement Agency) of the UK, and funded by the European Commission.

Immersive learning typically involves engaging several small groups of participants (4-7) in a scenario-based exercise. The group works together to deal with the challenges presented by the unfolding situation and their decisions are recorded as they go. All groups get the same inputs but their decisions invariably differ. Input may be given at different times depending on the progress of the group. The groups are brought together at key points to discuss their considerations and decision making, thereby developing their abilities and understanding. This facility is the first in Indonesia.



JCLEC POST-COURSE EVALUATION METHODOLOGY

Transferring knowledge, skills and attitudes from JCLEC training courses to the work place is the primary objective of each JCLEC training course.

JCLEC recognises the importance of evaluating the outcomes of each training course against this objective, and for this reason has continued using Kirkpatrick's four-phase evaluation model, introduced to JCLEC by the UNODC Transnational Crime and Criminal Justice Project. Kirkpatrick's evaluation model essentially measures:

1. Reaction of students - what they thought and felt about the training.
2. Learning - the resulting increase in knowledge or capability.
3. Behaviour - extent of behaviour and capability improvement and implementation/application.
4. Results - the effects on the business or environment resulting from the trainee's performance.

This evidence based approach allows the refinement and development of training modules that are suitable and relevant to adult learning. The first phase of the model involves participants undertaking a pre-course knowledge test and concludes with a follow up interview three to six months after the course to determine how the course material has been used in the participant's daily tasks. The information gathered through this process will be used to inform development and design of future training courses.



DINING OPTIONS

The Centre operates a modern commercial kitchen supporting two eateries – the Java Café and the Tulip Restaurant – which serve traditional Indonesian, Asian and international meals. The Catering team also provides those participants who are undertaking off-site activities with nourishing meals and caters to special dietary requirements.



ACCOMMODATION

The accommodation complex comprises international standard accommodation consisting of one VVIP villa, twelve VIP/instructor villas and a three-storey student accommodation building, which consists of 60 rooms with a sleeping capacity of 114 people per night. JCLEC also provides a range of recreational activities including a fitness centre and 33-metre outdoor lap pool.

Additionally, with agreement from the INP AKPOL Governor, JCLEC may access the AKPOL indoor and outdoor tennis courts, badminton courts and fitness trail.



JCLEC SECRETARIAT

The JCLEC Secretariat is located within INP Headquarters (Mabes Polri) in Jakarta and is staffed by staff of the INP and AFP, responsible for providing governance and administrative support for the JCLEC Foundation. The Secretariat is also responsible for foreign donor coordination as well as being the first point of contact for external enquiries. Additionally, the Secretariat provides a full range of secretariat functions on behalf of the Board of Management members.

STAFF AT JCLEC

INP Trainers

Superintendent Gede Suardana
Senior Superintendent Eko Rudi
Brigadier General Soepartiwi
Senior Superintendent Sulistiono
Assistant Superintendent Suwarno
Superintendent Widya Anugerah



International Trainers

Federal Agent Katrina Povolny
Staff Sergeant Julie Faucher



Training Support

Antonia Mayaningtyas
Ranita Agustina
Windy Wulansari
Jatmiko
Inosensia Dinda
Kanti D Setyarini
Ranita Agustina
Lunara Ugawa



Interpreters

Nendra Primasta
Amri nuryadin
Ria Yufanti
Kasih Wahyu
Yudhian Kusuma
Guntur Titah



Secretariat

Muji Novrita
Samantha Prideaux

Executive Assistants

Kumala Intan
Elia Camar



IT Support

Iwan Subiantoro
Satrio Dewantoro



Audio Visual Support

Budi Utomo
Tri Utomo
Indra Gunawan



Admin Support

Aulina Indrayani
Yustina
Djoko Susanto
Rachel Arninda



Finance Team

Didi Pribadi
Novita Risnawati



Drivers

Warih Prajoko
Budi Utomo
Hendri Purnomo
Suko Widodo

Cleaning Team



Gardening



Accommodation and Catering Staff



Security

List of Acronyms

ABF	Australian Border Force
AFP	Australian Federal Police
AGD	Attorney General's Department (Australia)
AIPM	Australian Institute of Police Management
AKPOL	Indonesian Police Academy
APLMA	Asia Pacific Medico Legal Association
ASEAN	Association of South East Asian Nations
AUD	Australian Dollar
BOM	Board of Management (JCLEC Foundation)
BOP	Board of Patrons (JCLEC Foundation)
BOS	Board of Supervisors (JCLEC Foundation)
CBT	Computer Based Training
CILC	Center for International Legal Cooperation
CT	Counter Terrorism
DFAT	Department of Foreign Affairs and Trade (Australia)
DFATD	Department of Foreign Affairs, Trade and Development (Canada)
DVI	Disaster Victim Identification
EC	European Commission
GAC	Global Affairs Canada
ICRC	International Committee of the Red Cross
IDR	Indonesian Rupiah
ILEA	International Law Enforcement Academy
IMOSC	International Management of Serious Crime

INP	Indonesian National Police
IT	Information Technology
JCLEC	Jakarta Centre for Law Enforcement Cooperation
KEMLU	Foreign Ministry of the Republic of Indonesia
KPK	Corruption Eradication Commission
LEMDIKPOL	INP Education and Training Institutions
NICHE	Netherlands Initiative for Capacity Development in Higher Education
NZ	New Zealand
PPATK	Indonesian Financial Transaction Report and Analyst Centre
RELP	Regional Executive Leadership Program
RSO	Regional Support Office, Bali Process
SEA	South East Asia
TNCC	Trans-National Crime Centre
USAID	United States Agency for International Development
UNODC	United Nations Office on Drugs and Crime
USA	United States of America
US-ATA	United States Anti-Terrorism Assistance Program

INDEPENDENT AUDITOR'S REPORT

*Financial Statements - Cash Basis and
Independent Auditor's Report*

Laporan Keuangan - Basis Kas Dan
Laporan Auditor Independen

**JAKARTA CENTRE FOR LAW ENFORCEMENT COOPERATION
FOUNDATION**

For The Year Ended December 31, 2015

Untuk Tahun Yang Berakhir Tanggal 31 Desember 2015

Gideon Adi & Rekan

Registered Public Accountants

*Financial Statements - Cash Basis and
Independent Auditor's Report*

*Laporan Keuangan - Basis Kas dan
Laporan Auditor Independen*

JAKARTA CENTRE FOR LAW ENFORCEMENT COOPERATION FOUNDATION

For The Year Ended December 31, 2015

Untuk Tahun Yang Berakhir Tanggal 31 Desember 2015

**Financial Statements
With Independent Auditors' Report**

**JAKARTA CENTRE FOR LAW
ENFORCEMENT COOPERATION
FOUNDATION**

For The Year Ended December 31, 2015

**Laporan Keuangan
Dengan Laporan Auditor Independen**

**JAKARTA CENTRE FOR LAW
ENFORCEMENT COOPERATION
FOUNDATION**

**Untuk Tahun Yang Berakhir Tanggal
31 Desember 2015**

	<u>Page/ Halaman</u>	
FINANCIAL STATEMENTS		LAPORAN KEUANGAN
1. Statement of Financial Position – Cash Basis	1	1. Laporan Posisi Keuangan – Basis Kas
2. Statement of Activity – Cash Basis	2	2. Laporan Aktivitas – Basis Kas
3. Notes to Financial Statement – Cash Basis	3	3. Catatan atas Laporan Keuangan – Basis Kas

Independent Auditors' Report

No. : 09/JCLECF/II/16

Board of Patrons, Board of Supervisors, and
Board of Management**JAKARTA CENTRE FOR LAW
ENFORCEMENT COOPERATION
FOUNDATION**

We have audited the accompanying statements of Financial Position and Statement of Activity arising from the cash transactions of the Jakarta Centre for Law Enforcement Cooperation Foundation (JCLECF) for the year ended December 31, 2015, and the related cash basis statement of activity changes in net asset for the year ended and a summary of significant accounting policies and other explanatory information.

**Management's responsibility for the financial
statements**

Management is responsible for the preparation and fair presentation of such financial statements in accordance with Indonesian Financial Accounting Standards, and for such internal control as management determines is necessary to enable the preparation of financial statements that are free from material misstatement, whether due to fraud or error.

Auditors' responsibility

Our responsibility is to express an opinion on such financial statements based on our audit. We conducted our audit in accordance with Standards on Auditing established by the Indonesian Institute of Certified Public Accountants. Those standards require that we comply with ethical requirements and plan and perform the audit to obtain reasonable assurance about whether such financial statements are free from material misstatement.

Laporan Auditor Independen

No. 09/JCLECF/II/16

Dewan Pembina, Dewan Pengawas, dan Dewan
Pengurus**JAKARTA CENTRE FOR LAW
ENFORCEMENT COOPERATION
FOUNDATION**

Kami telah mengaudit laporan posisi keuangan the Jakarta Centre for Law Enforcement Cooperation Foundation (JCLECF) untuk tahun yang berakhir tanggal 31 Desember 2015, serta laporan aktivitas dan laporan perubahan aset neto yang berakhir pada tanggal tersebut dan satu ikhtisar kebijakan akuntansi signifikan dan informasi penjelasan lainnya.

**Tanggung jawab manajemen atas laporan
keuangan**

Manajemen bertanggung jawab atas penyusunan dan penyajian wajar laporan keuangan tersebut sesuai dengan Standar Akuntansi Keuangan di Indonesia, dan atas pengendalian internal yang dianggap perlu oleh manajemen untuk memungkinkan penyusunan laporan keuangan yang bebas dari kesalahan penyajian material, baik yang disebabkan oleh kecurangan maupun kesalahan.

Tanggung jawab auditor

Tanggung jawab kami adalah untuk menyatakan suatu opini atas laporan keuangan tersebut berdasarkan audit kami. Kami melaksanakan audit kami berdasarkan Standar Audit yang ditetapkan oleh Institut Akuntan Publik Indonesia. Standar tersebut mengharuskan kami untuk mematuhi ketentuan etika serta merencanakan dan melaksanakan audit untuk memperoleh keyakinan memadai tentang apakah laporan keuangan tersebut bebas dari kesalahan penyajian material.

An audit involves performing procedures to obtain audit evidence about the amounts and disclosures in the financial statements. The procedures selected depend on the auditors' judgment, including the assessment of the risks of material misstatement of the financial statements, whether due to fraud or error. In making those risk assessments, the auditors consider internal control relevant to the entity's preparation and fair presentation of the financial statements in order to design audit procedures that are appropriate in the circumstances, but not for the purpose of expressing an opinion on the effectiveness of the entity's internal control. An audit also includes evaluating the appropriateness of accounting policies used and the reasonableness of accounting estimates made by management, as well as evaluating the overall presentation of the financial statements.

We believe that the audit evidence we have obtained is sufficient and appropriate to provide a basis for our audit opinion.

Opinion

In our opinion, based on our audits, such financial statements present fairly, in all material respects, the cash basis statement of financial position of the Jakarta Centre for Law Enforcement Cooperation Foundation for the year ended December 31, 2015, and the related cash basis statement of activity as described in Note 2 of note to the financial statements, which is another comprehensive basis of accounting other than financial accounting standard in Indonesia.

Suatu audit melibatkan pelaksanaan prosedur untuk memperoleh bukti audit tentang angka-angka dan pengungkapan dalam laporan keuangan. Prosedur yang dipilih bergantung pada pertimbangan auditor, termasuk penilaian atas risiko kesalahan penyajian material dalam laporan keuangan, baik yang disebabkan oleh kecurangan maupun kesalahan. Dalam melakukan penilaian risiko tersebut, auditor mempertimbangkan pengendalian internal yang relevan dengan penyusunan dan penyajian wajar laporan keuangan entitas untuk merancang prosedur audit yang tepat sesuai dengan kondisinya, tetapi bukan untuk tujuan menyatakan opini atas keefektifitasan pengendalian internal entitas. Suatu audit juga mencakup pengevaluasian atas ketepatan kebijakan akuntansi yang digunakan dan kewajaran estimasi akuntansi yang dibuat oleh manajemen, serta pengevaluasian atas penyajian laporan keuangan secara keseluruhan.

Kami yakin bahwa bukti audit yang telah kami peroleh adalah cukup dan tepat untuk menyediakan suatu basis bagi opini audit kami.

Opini

Menurut pendapat kami, berdasarkan audit kami, laporan keuangan yang kami sebut di atas menyajikan secara wajar, dalam semua hal yang material, posisi keuangan The Jakarta Centre for Law Enforcement Cooperation Foundation untuk tahun yang berakhir 31 Desember 2015, serta laporan aktivitas dan perubahan aset neto seperti diterangkan pada Catatan 2 di Catatan Atas Laporan Keuangan, yang merupakan standar akuntansi lain selain Standar Akuntansi Keuangan di Indonesia.

GIDEONADI & REKAN
Registered Public Accountants/
Kantor Akuntan Publik



Gideon Adi Siallagan, M.Acc, C.A., CPA
Public Accountant License No. AP. 460/Surat Izin Akuntan Publik No. AP.460

February 12, 2016/12 Februari 2016

Statement of Financial Position – Cash Basis**Laporan Posisi Keuangan – Basis Kas**

**JAKARTA CENTRE FOR LAW
ENFORCEMENT COOPERATION
FOUNDATION**
December 31, 2015

**JAKARTA CENTRE FOR LAW
ENFORCEMENT COOPERATION
FOUNDATION**
31 Desember 2015

	<i>Notes / Catatan</i>	<i>In IDR/ Dalam Rupiah</i>	<i>AUD Equivalent/ Setara AU\$</i>	
ASSET				ASET
Cash in bank	3	16,326,332,122	1,622,225	Bank
Total Asset		16,326,332,122	1,622,225	Jumlah Aset
NET ASSET				ASET NETO
Grant	4	16,326,332,122	1,622,225	Hibah
Total Net Asset		16,326,332,122	1,622,225	Jumlah Aset Neto

The accompanying Notes to Financial Statements are an integral part of the financial statements

Catatan atas Laporan Keuangan merupakan bagian yang tidak terpisahkan dari laporan keuangan secara keseluruhan.

1

Statement Of Activity

Laporan Aktivitas

**JAKARTA CENTRE FOR LAW
ENFORCEMENT COOPERATION
FOUNDATION**

**JAKARTA CENTRE FOR LAW
ENFORCEMENT COOPERATION
FOUNDATION**

For The Year Ended December 31, 2015

**Untuk Tahun Yang Berakhir Tanggal
31 Desember 2015**

	Notes / Catatan	In IDR/ Dalam Rupiah	AUD Equivalent/ Setara AU\$	
GRANT				HIBAH
Account received	2c,4a	28,671,080,251	2,848,907	Penerimaan Dana
Total Revenue		28,671,080,251	2,848,907	Jumlah hibah
EXPENDITURE				BIAYA
Fixed asset and construction	4b	(2,226,095,745)	(221,196)	Aset tetap dan biaya konstruksi
Discretionary expense	4c	(23,333,523,324)	(2,318,540)	Biaya Diskresi
Fixed office expense	4d	(969,094,928)	(96,294)	Biaya kantor
Total Expenditure		(26,528,713,997)	(2,636,030)	Jumlah biaya
EXCESS REVENUE OVER EXPENDITURE		2,142,366,254	212,877	KELEBIHAN HIBAH ATAS BIAYA
Foreign exchange net	2d,5	(2,777,981,705)	(250,622)	Selisih kurs bersih
Net asset beginning of the period		16,961,947,573	1,659,970	Aset neto awal periode
NET ASSET AT THE END OF THE YEAR		16,326,332,122	1,622,225	ASET NETO AKHIR TAHUN

The accompanying Notes to Financial Statements are an integral part of the financial statements

Catatan atas Laporan Keuangan merupakan bagian yang tidak terpisahkan dari laporan keuangan secara keseluruhan.

**JAKARTA CENTRE FOR LAW
ENFORCEMENT COOPERATION
FOUNDATION**

For The Year Ended December 31, 2015

**JAKARTA CENTRE FOR LAW
ENFORCEMENT COOPERATION
FOUNDATION**

**Untuk Tahun Yang Berakhir Tanggal
31 Desember 2015**

1. GENERAL

Cooperation between the Australian Federal Police (AFP) and the Indonesian National Police (INP) has been formalized in the Memorandum of Understanding dated August 5, 1997, and has been reaffirmed with the most recent reaffirmation being signed in Bali, Indonesia on November 20, 2011.

In a Joint Announcement on February 6, 2004, the Australia Government and the Government of the Republic of Indonesia stressed the need to fully cooperate in national and international efforts in combating terrorist group. Within the context of combating all forms of transnational crime, both governments agreed to establish the Jakarta Centre for Law Enforcement Cooperation Foundation (JCLECF). The JCLECF is an international centre and donations are welcomed from other governments.

On February 4, 2004, the Australian Federal Police Commissioner and the Chief of the Indonesia National Police signed a Joint Declaration on the establishment of the JCLECF. This declaration identified the need for cooperation among countries and their law enforcement agencies, and in particular police agencies, to develop synergies to increase capabilities to combat terrorism and other transnational crimes.

Yayasan Pusat Kerjasama di Bidang Penegakan Hukum Jakarta or Jakarta Centre for Law Enforcement Cooperation Foundation, hereinafter abbreviated to JCLECF, was legalized under the notarial deed No. 111 dated February 28, 2005 by Misahardi Wilamarta, SH, notary in Jakarta. The deed of establishment was approved by the Minister of Justice and Human Rights of Republic of Indonesia in his Decision Letter No. C-375.HT.01.02.TH 2005 dated March 23, 2005 and was published in the State Gazette of Republic of Indonesia No. 202 dated March 23, 2005.

1. UMUM

Kerjasama antar kepolisian Federal Australia (AFP) dan Kepolisian Republik Indonesia telah diresmikan melalui Nota Kesepahaman tertanggal 5 Juli 1997 dan telah ditegaskan kembali dalam penegasan terbarunya yang ditandatangani di Bali, Indonesia pada tanggal 20 November 2011.

Dalam pemberitahuan bersama pada tanggal 6 Februari 2004, pemerintah Australia dan pemerintah Republik Indonesia menekankan pentingnya bekerjasama secara penuh dalam upaya nasional dan Internasional memerangi kelompok teroris. Dalam konteks memerangi segala bentuk kejahatan lintas negara, kedua pemerintah sepakat mendirikan Yayasan Pusat Kerjasama di Bidang Penegakan Hukum Jakarta / Jakarta Centre for Law Enforcement Cooperation Foundation (JCLECF), JCLECF merupakan sebuah pusat internasional dan sumbangan dapat diterima dari pemerintah negara lain.

Pada tanggal 4 Februari 2004, Komisiner Kepolisian Federal Australian dan Kepolisian Negara Indonesia menandatangani Deklarasi Bersama pendirian JCLECF. Deklarasi tersebut menerangkan perlunya kerjasama antar negara dan antar lembaga penegakan hukumnya, secara khusus untuk lembaga kepolisiannya untuk mengembangkan sinergi dalam peningkatan kapabilitas untuk memerangi terorisisme dan kejahatan lintas negara lainnya.

Yayasan Pusat Kerjasama di Bidang Penegakan Hukum Jakarta atau Jakarta Centre for Law Enforcement Cooperation Foundation (disingkat JCLECF) disahkan dengan akta notaris No. 111 tertanggal 28 Februari 2005 oleh Misahardi Wilamarta, SH, notaris di Jakarta. Akta Pendirian disetujui oleh Menteri Hukum dan Hak Asasi Manusia melalui Surat Keputusan No. C-375.HT.01.02.TH 2005 tertanggal 23 Maret 2005 dan diterbitkan dalam Lembaran Negara Republik Indonesia No. 202 tanggal 23 Maret 2005.

Notes To The Financial Statements – Cash Basis

**JAKARTA CENTRE FOR LAW
ENFORCEMENT COOPERATION
FOUNDATION**

For The Year Ended December 31, 2015

1. GENERAL (Continued)

JCLECF head office is domiciled at Jalan Trunojoyo No. 3, South Jakarta. Its training centre is located within the Indonesia National Police Academy (AKPOL) at Semarang, Central Java.

In accordance with the JCLEC deed of establishment, changes to Board members have been managed via Patrons Circular Resolution. The Boards of Patrons, Supervisors and Management consist as follow:

Board of Patrons

*Presiding
Patron : Commissioner Andrew
Alexander Colvin*

*Member : Police General Badrodin Haiti
Assistant Commissioner Neil
Gaughan
Police Commissioner General
Syafuruddin
Police Inspector General Sabar
Raharjo*

Board of Supervisors

*Member : Andy Rachmianto
Bradley Joseph Armstrong
Juliet Marie Maric Capeling*

Board of Management

*Chairman : Police Brigadier General
Soepartiwi
Secretary : Superintendent James Stokes
Member : Police Brigadier General
Rachmad Fudail
Treasurer : Det.Supt.John Tanti*

Catatan Atas Laporan Keuangan – Basis Kas

**JAKARTA CENTRE FOR LAW
ENFORCEMENT COOPERATION
FOUNDATION**

**Untuk Tahun Yang Berakhir Tanggal
31 Desember 2015**

1. UMUM (Lanjutan)

Kantor Pusat JCLECF terletak di Jalan Trunojoyo No. 3, Jakarta Selatan. Pusat pelatihannya berada di dalam Akademi Kepolisian Republik Indonesia (AKPOL), Semarang, Jawa Tengah.

Berdasarkan akta pendirian JCLEC, perubahan anggota dewan berdasarkan Keputusan Dewan Pembina. Dewan Pembina, Pengawas dan Pengurus terdiri dari:

Dewan Pembina

Ketua
Pembina : Komisioner Andrew
Alexander Colvin

Anggota : Jenderal Polisi Badrodin Haiti
Asisten Komisioner Neil
Gaughan
Komisaris Jenderal Polisi
Syafuruddin
Inspektur Jenderal Polisi
Sabar Raharjo

Dewan Pengawas

Anggota : Andy Rachmianto
Bradley Joseph Armstrong
Juliet Marie Maric Capeling

Dewan Pengurus

Ketua : Brigadir Jenderal Polisi
Soepartiwi
Sekretaris : Superintendent James Stokes
Anggota : Brigadir Jenderal Polisi
Rachmad Fudail
Bendahara: Det.Supt.John Tanti

Notes To The Financial Statements – Cash Basis

**JAKARTA CENTRE FOR LAW
ENFORCEMENT COOPERATION
FOUNDATION**

For The Year Ended December 31, 2015

Catatan Atas Laporan Keuangan – Basis Kas

**JAKARTA CENTRE FOR LAW
ENFORCEMENT COOPERATION
FOUNDATION**

**Untuk Tahun Yang Berakhir Tanggal
31 Desember 2015**

**2. BASIS OF ACCOUNTING AND
FINANCIAL STATEMENTS**

a. Basis of Financial Statement

Financial Statements have been prepared on the basis of cash receipt and disbursement which is an other comprehensive basis of accounting other than financial accounting standard in Indonesia. Under this basis, revenues are recognized when collected rather than when earned, and expenses are recognized when paid rather than when incurred. Consequently, not all account receivable and accounts payable to other parties may be included in the cash basis financial statements.

b. Fixed asset and construction cost

JCLECF uses the policy that construction costs and purchases of fixed assets are charged to expenses in the period of acquisition rather than capitalizing and depreciating them over their estimated useful life. Fixed assets are held on record in an asset register maintained by JCLECF.

c. Recognition of Grants Received

JCLECF records grants in the period designated by grantor. The grants that have been received and not yet been used for implementation programs are stated in the accompanying cash basis statement of assets and liability as unused grants.

d. Foreign currency transactions and balances

JCLECF's accounting and reporting are maintained in Indonesian Rupiah. All transactions in other currencies are translated into Indonesian Rupiah at the exchange rate at the date of transaction.

**2. DASAR LAPORAN AKUNTING DAN
KEUANGAN**

a. Dasar Penyusunan Laporan Keuangan

Laporan Keuangan telah disusun berdasarkan basis penerimaan dan pengeluaran kas yang merupakan basis akuntansi keuangan lain selain standar akuntansi keuangan di Indonesia. Dengan menggunakan basis ini, penerimaan diakui pada saat kas diterima, bukan dihasilkan dan biaya diakui pada saat dibayarkan, bukan pada saat biaya tersebut terjadi. Akibatnya, tidak semua piutang dan hutang ke pihak ketiga tidak termasuk dalam laporan keuangan basis kas.

b. Aset tetap dan biaya konstruksi

JCLECF menggunakan kebijakan bahwa biaya konstruksi dan pembelian aset tetap akan langsung dibiayakan pada saat perolehan, bukan dikapitalisasi dan disusutkan selama masa manfaat aset tetap tersebut. Aset tetap dicatat dan dikelola dalam daftar aset tetap JCLECF.

c. Pengakuan Penerimaan Hibah

JCLECF mencatat hibah dalam periode yang ditentukan oleh donor. Hibah yang telah diterima tetapi belum digunakan dicatat sebagai hibah yang belum digunakan dalam laporan aset dan kewajiban berbasis kas.

d. Saldo dan Transaksi dalam mata uang asing

Pencatatan dan pelaporan JCLECF menggunakan mata uang Rupiah. Semua transaksi selain Rupiah akan ditranslasi ke dalam mata uang rupiah dengan menggunakan kurs transaksi.

Notes To The Financial Statements – Cash Basis

**JAKARTA CENTRE FOR LAW
ENFORCEMENT COOPERATION
FOUNDATION**

For The Year Ended December 31, 2015

**2. BASIS OF ACCOUNTING AND
FINANCIAL STATEMENTS (Continued)**

As of December 31, 2015, monetary assets in foreign currencies are translated into Indonesian Rupiah at the Bank Indonesia exchange mid-rate. There are gains and losses on foreign exchange are credited or charged of Net Asset.

BI exchange rate for JCLECF's foreign currencies at December 31, 2015 as follow:

Currencies	Value	Sell
USD	1.00	13,864.00
AUD	1.00	10,117.95
CAD	1.00	9,999.28

**3. STATEMENT OF FINANCIAL POSITION
ITEMS**

Cash in Bank

This account consists of the:

	In IDR
Bank ANZ	
IDR	7,139,289,020
AUD	395,454,368
USD (\$28,666.50)	8,791,588,734
Total Cash in Bank	16,326,332,122

Catatan Atas Laporan Keuangan – Basis Kas

**JAKARTA CENTRE FOR LAW
ENFORCEMENT COOPERATION
FOUNDATION**

**Untuk Tahun Yang Berakhir Tanggal
31 Desember 2015**

**2. DASAR LAPORAN AKUNTING DAN
KEUANGAN (Lanjutan)**

Pada tanggal 31 Desember 2015, aset moneter akan ditranslasi ke dalam mata uang Rupiah dengan menggunakan kurs tengah Bank Indonesia. Laba dan rugi atas nilai tukar akan dicatat ke dalam Aset Neto.

Nilai tukar BI pada tanggal 31 Desember 2015 adalah sebagai berikut:

Buy	Mid Rate	Mata Uang
13,726.00	13,795.00	AS\$
10,010.37	10,064.16	AU\$
9,896.89	9,948.09	CA\$

3. ITEM LAPORAN POSISI KEUANGAN

Bank

Akun ini terdiri dari:

AUD Equivalent	
	Bank ANZ
709,378	Rp
39,293	AU\$
873,554	(28,666.50) AS\$
1,622,225	Jumlah Bank

Notes To The Financial Statements – Cash Basis

**JAKARTA CENTRE FOR LAW
ENFORCEMENT COOPERATION
FOUNDATION**

For The Year Ended December 31, 2015

4. STATEMENT OF ACTIVITY ITEMS

a. Account Received

This account represents accounts received for the period from January 1 to December 31, 2015 which consist of:

	In IDR
AFP Australian Embassy	16,702,730,027
British Embassy	2,671,305,175
Royal Danish Embassy	4,000,716,039
New Zealand	901,861,205
DSATA (USA)	781,157,630
International Criminal Police Organization (Interpol)	695,915,751
Royal Canadian Mounted Police	582,654,665
NUFFIC	545,564,955
The Center for International Legal Cooperation (CILC)	322,119,578
Others	
(Below Rp 150,000,000)	1,467,055,226
Total Grant Received	28,671,080,251

b. Fixed asset and construction cost

This account consists of accumulated expenditures for the purchase of fixed assets and construction for training facilities for the period from January 1 to December 31, 2015, which amounted to IDR 2,226,095,745 or equivalent to AUD 221,196.

Training facilities represent accumulated costs for acquisition of equipment and purchase of furniture and fixtures.

c. Discretionary Expense

	In IDR
Training Expenses	14,915,967,432
Travel Expenses	7,604,658,302
Property Items	812,897,590
Total	23,333,523,324

Catatan Atas Laporan Keuangan – Basis Kas

**JAKARTA CENTRE FOR LAW
ENFORCEMENT COOPERATION
FOUNDATION**

**Untuk Tahun Yang Berakhir Tanggal
31 Desember 2015**

4. ITEM LAPORAN AKTIVITAS

a. Penerimaan dana

Akun ini merupakan penerimaan dana yang diterima dari tanggal 1 Januari sampai dengan 31 Desember 2015, sebagai berikut:

	AUD Equivalent	
1,659,670	AFP Australian Embassy	
265,435	British Embassy	
397,532	Royal Danish Embassy	
89,614	Selandia Baru	
77,620	DSATA (USA)	
69,150	International Criminal Police Organization (Interpol)	
57,896	Royal Canadian Mounted Police	
54,210	NUFFIC	
32,007	The Center for International Legal Cooperation (CILC)	
145,773	Lain-lain	
	(Dibawah Rp 150,000,000)	
2,848,907	Total Hibah Diterima	

b. Aset Tetap dan biaya konstruksi

Akun ini terdiri dari akumulasi pengeluaran untuk pembelian dan konstruksi aset tetap untuk periode 1 Januari sampai dengan 31 Desember 2015 sejumlah Rp 2,226,095,745 setara dengan AU\$ 221,196.

Fasilitas kursus merupakan akumulasi biaya konstruksi dan pembelian peralatan serta perlengkapan kursus.

c. Biaya Diskresi

	AUD Equivalent	
1,482,128	Biaya Kursus	
755,638	Biaya Perjalanan	
80,774	Biaya Kantor	
2,318,540	Jumlah	

Notes To The Financial Statements – Cash Basis

**JAKARTA CENTRE FOR LAW
ENFORCEMENT COOPERATION
FOUNDATION**

For The Year Ended December 31, 2015

**4. STATEMENT OF ACTIVITY
ITEMS(Continued)**

Discretionary expenses were funded by the grant received from the Royal Danish Embassy and several other grantors (See Note 4a) which are managed under several Bank Accounts, with details as follows:

JCLECF's Yayasan Account - Rupiah (ANZ Panin Bank Account No. 097147-01-00001) - Operating Account

This account was used by JCLEC in order to manage several disbursements that are funded by some other grantors. Such funds were allocated to several expenses as follows:

	In IDR
Training Expenses	8,623,720,164
Travel Expenses	7,593,855,302
Property items	327,575,597
Total	16,545,151,063

JCLECF's Reimbursement Account – AUD (ANZ Panin Bank Account No. 097147-03-00001).

This account was used by JCLECF in order to manage several disbursements that are funded by the AFP and to finance property items which amounted to IDR 2,240,323 or equivalent to AUD 223.

JCLECF's Computer Based Training (CBT) Account – AUD (ANZ Panin Bank Account No 097147-03-00012)

This account was used by JCLECF in order to manage the training expenses for CBT and to finance property items which amounted to IDR 2,683,105 or equivalent to AUD 267.

Catatan Atas Laporan Keuangan – Basis Kas

**JAKARTA CENTRE FOR LAW
ENFORCEMENT COOPERATION
FOUNDATION**

**Untuk Tahun Yang Berakhir Tanggal
31 Desember 2015**

4. ITEM LAPORAN AKTIVITAS (Lanjutan)

Biaya Diskresi didanai oleh hibah yang diterima dari Royal Danish Embassy dan beberapa donor lain (lihat Catatan 4a) yang dikelola melalui beberapa rekening dengan rincian sebagai berikut:

JCLECF's Yayasan Rekening - Rupiah (ANZ Panin Rekening Bank No. 097147-01-00001) - rekening operasional

Akun ini digunakan oleh JCLEC dalam mengelola pengeluaran yang didanai oleh beberapa donor lain. Dana tersebut dialokasikan ke beberapa biaya sebagai berikut:

	AUD Equivalent	
856,898		Biaya Training
754,565		Biaya Perjalanan
32,550		Perlengkapan kantor
1,644,013		Jumlah

JCLECF's Reimbursement Rekening – AU\$ (ANZ Panin Rekening Bank No. 097147-03-00001).

Akun ini digunakan oleh JCLEC dalam mengelola pengeluaran yang didanai oleh AFP dan untuk membiayai perlengkapan kantor dengan jumlah Rp 2.240.323 atau setara dengan AU\$ 223.

JCLECF's Computer Based Training (CBT) Rekening – AU\$ (ANZ Panin Rekening Bank No 097147-03-00012).

Akun ini digunakan oleh JCLECF untuk membiayai kursus program CBT dan untuk membiayai perlengkapan kantor dengan jumlah Rp Rp 2.683.105 atau setara dengan AU\$ 267.

Notes To The Financial Statements – Cash Basis

**JAKARTA CENTRE FOR LAW
ENFORCEMENT COOPERATION
FOUNDATION**

For The Year Ended December 31, 2015

**4. STATEMENT OF ACTIVITY ITEMS
(Continued)**

**JCLECF's Research Account – AUD
(ANZ Panin Bank Account No 097147-
03-00013).**

This account was used by JCLECF in order to manage research training and property items expenses which amounted to IDR 40,957,675 or equivalent to AUD 4,070.

JCLECF's Germany-Bundes Kriminalamt – USD (ANZ Panin Bank Account No. 097147-02-00013)

This account was used by JCLECF in order to finance property items that are funded by Germany-Bundes Kriminalamt which amounted to IDR 1,065,978 or equivalent to AUD 106.

JCLECF's IDR (ANZ Panin Bank Account No. 097147-01-00012)

This account was used by JCLECF in order to finance property items which amounted to IDR 667,712,980 or equivalent to AUD 66,347.

JCLECF's CAD (ANZ Panin Bank Account No. 097147-11-00001)

This account was used by JCLECF in order to finance property items which amounted to IDR 1,876,665 or equivalent to AUD 185.

JCLECF's IDR (ANZ Panin Bank Account No. 097147-01-00013)

This account was used by JCLECF in order to manage several disbursements that are funded by Royal Danish Government and to finance training expenses which amounted to IDR 3,270,905,324 or equivalent to AUD 325,014.

Catatan Atas Laporan Keuangan – Basis Kas

**JAKARTA CENTRE FOR LAW
ENFORCEMENT COOPERATION
FOUNDATION**

**Untuk Tahun Yang Berakhir Tanggal
31 Desember 2015**

4. ITEM LAPORAN AKTIVITAS (Lanjutan)

**JCLECF's Rekening Penelitian – AU\$
(ANZ Panin Rekening Bank
No 097147-03-00013).**

Akun ini digunakan oleh JCLECF untuk membiayai kursus penelitian dan perlengkapan kantor dengan jumlah Rp 40.957.675 atau setara dengan AU\$ 4.070.

JCLECF's Germany-Bundes Kriminalamt – AS\$ (ANZ Panin Rekening Bank No. 097147-02-00013)

Akun ini digunakan oleh JCLECF untuk membiayai pembelian perlengkapan kantor yang didanai Germany-Bundes Kriminalamt dengan jumlah Rp 1.065.978 atau setara dengan AU\$ 106.

JCLECF's IDR (ANZ Panin Rekening Bank No. 097147-01-00012)

Akun ini digunakan oleh JCLECF untuk membiayai perlengkapan kantor sejumlah Rp 667.712.980 atau setara dengan AU\$ 66.347.

JCLECF's CA\$ (ANZ Panin Rekening Bank No. 097147-11-00001)

Akun ini digunakan oleh JCLECF untuk membiayai perlengkapan kantor sejumlah Rp 1.876.665 atau setara dengan AU\$ 185.

JCLECF's IDR (ANZ Panin Rekening Bank No. 097147-01-00013)

Akun ini digunakan oleh JCLECF dalam mengelola pengeluaran yang didanai oleh Royal Danish Government dan untuk membiayai kursus pelatihan dengan jumlah Rp 3.270.905.324 atau setara dengan AU\$ 325.014.

Notes To The Financial Statements – Cash Basis

**JAKARTA CENTRE FOR LAW
ENFORCEMENT COOPERATION
FOUNDATION**

For The Year Ended December 31, 2015

**4. STATEMENT OF ACTIVITY ITEMS
(Continued)**

**JCLECF's IDR (ANZ Panin Bank
Account No. 097147-01-15290)**

This account was used by JCLEC in order to manage several disbursements that are funded by NUFFIC and to finance training expenses which amounted to IDR 85,593,000 or equivalent to AUD 8,505.

d. Fixed Office Expense

The fixed office expenses represent bank charges from ANZ Panin Bank for the period from January 1 to December 31, 2015 which amounted to IDR 43,233,322 or equivalent to AUD 4,296.

**5. TRANSLATION RATE AND EFFECT OF
CURRENCY EXCHANGE**

JCLECF maintains its books of accounts in Indonesian rupiah. JCLECF cash disbursements for all activities have been paid from cash on hand and JCLECF reimbursement bank account in Indonesian rupiah and Australian dollar. JCLECF made invoicing for reimbursement the cost to the grantors in Indonesian rupiah, but the grantor paid in other currencies.

At the end of period, cash in bank and unused grants denominated in foreign currencies are adjusted to reflect rate of the exchange prevailing at that date.

The resulting gains or losses are credited or charged to current operations.

The translation of Indonesian rupiah into Australian dollar is made solely for the convenience of readers. Revenues and expenses were translated to Australian Dollar (AUD) using the average rate of IDR 10,063.89 per AUD 1, which is based on the average exchange rate published by Bank Indonesia for the period ended December 31, 2015.

Catatan Atas Laporan Keuangan – Basis Kas

**JAKARTA CENTRE FOR LAW
ENFORCEMENT COOPERATION
FOUNDATION**

**Untuk Tahun Yang Berakhir Tanggal
31 Desember 2015**

4. ITEM LAPORAN AKTIVITAS (Lanjutan)

**JCLECF's IDR (ANZ Panin Rekening
Bank No. 097147-01-15290)**

Akun ini digunakan oleh JCLEC dalam mengelola pengeluaran yang didanai oleh NUFFIC dan untuk membiayai kursus pelatihan dengan jumlah Rp 85.593.000 atau setara dengan AU\$ 8.505.

d. Biaya kantor

Akun ini merupakan biaya administrasi bank dari ANZ Panin Bank untuk periode 1 Januari sampai dengan 31 Desember 2015 sejumlah Rp 43.233.322 atau setara dengan AU\$ 4.296.

**5. PENGARUH TRANSLASI DAN NILAI
TUKAR**

JCLECF melakukan pembukuan dalam mata uang Rupiah. Pengeluaran-pengeluaran JCLECF sehubungan dengan aktivitasnya dilakukan melalui kas kecil dan bank. JCLECF akan melakukan penagihan atas biaya yang terjadi dalam mata uang Rupiah, akan tetapi donor akan melakukan pembayaran dalam mata uang selain Rupiah.

Pada akhir periode, Saldo Bank dan hibah yang belum digunakan akan ditranslasi untuk mencerminkan kurs yang berlaku pada tanggal tersebut.

Laba atau rugi dari translasi tersebut akan dikreditkan atau dibebankan dalam operasi periode berjalan.

Translasi dari mata uang Rupiah ke dalam dolar Australia semata-mata dilakukan untuk kemudahan pembaca laporan ini. Hibah dan biaya ditranslasi kedalam mata uang dolar Australia dengan menggunakan kurs rata-rata Rp 10,063.89 per AU\$ 1, yaitu berdasarkan kurs tengah yang dikeluarkan oleh Bank Indonesia untuk periode yang berakhir tanggal 31 Desember 2015.

Notes To The Financial Statements – Cash Basis

**JAKARTA CENTRE FOR LAW
ENFORCEMENT COOPERATION
FOUNDATION**

For The Year Ended December 31, 2015

6. SIGNIFICANT AGREEMENTS

Agreement with Ministry of Foreign Affairs of Denmark

On 25 June 2014, JCLEC and the Ministry of Foreign Affairs of Denmark signed a bilateral agreement regarding development cooperation concerning core support to the JCLEC strategic plan 2014-2019 to support the overall training and course programmes on combating transnational crimes.

Ministry of Foreign Affairs of Denmark has agreed to support JCLEC with the amount of DKK 6,000,000 on a grant basis.

The indicative schedule and indicative amount for disbursement of the grant are as follow:

Payment	Schedule	Amount in DKK
1	June 2014	2,500,000
2	June 2015	2,000,000
3	May 2016	1,000,000
4	April 2017	500,000
	Total	6,000,000

The second payment of the grant amounted to DKK 2,000,000 and was transferred on June 30, 2015.

Agreement with Netherlands Organization for International Cooperation in Higher Education (NUFFIC)

On 22 September 2014, JCLEC and the Ministry of Netherlands Organization for International Cooperation in Higher Education (NUFFIC) signed an agreement regarding the development and implementation of a national curriculum on combating transnational crimes based on international best practices.

Catatan Atas Laporan Keuangan – Basis Kas

**JAKARTA CENTRE FOR LAW
ENFORCEMENT COOPERATION
FOUNDATION**

**Untuk Tahun Yang Berakhir Tanggal
31 Desember 2015**

6. PERJANJIAN PENTING

Perjanjian dengan Kementerian Luar Negeri Denmark

Pada tanggal 25 Juni 2014, JCLEC dengan Kementerian Luar Negeri Denmark menandatangani perjanjian bilateral untuk membangun kerja sama atas rencana strategis JCLEC 2014-2019 untuk membantu program dan kursus pelatihan memberantas kejahatan lintas negara.

Kementerian Luar Negeri Denmark setuju untuk memberikan bantuan hibah dengan dana sebesar DKK 6.000.000.

Rencana jadwal dan rencana jumlah untuk pencairan hibah adalah sebagai berikut:

Pembayaran	Jadwal	Jumlah DKK
1	Juni 2014	2,500,000
2	Juni 2015	2,000,000
3	Mei 2016	1,000,000
4	April 2017	500,000
	Jumlah	6,000,000

Pembayaran kedua bantuan hibah sebesar DKK 2.000.000 dan telah dilakukan pada tanggal 30 Juni 2015.

Perjanjian dengan Agreement with Netherlands Organization for International Cooperation in Higher Education (NUFFIC)

Pada tanggal 22 September 2014, JCLEC dengan Netherlands Organization for International Cooperation in Higher Education (NUFFIC) menandatangani perjanjian kerja sama untuk membangun dan melaksanakan kurikulum pemberantasan kejahatan lintas Negara berdasarkan tata cara internasional pemberantasan kejahatan lintas negara.

Notes To The Financial Statements – Cash Basis

**JAKARTA CENTRE FOR LAW
ENFORCEMENT COOPERATION
FOUNDATION**

For The Year Ended December 31, 2015

6. SIGNIFICANT AGREEMENTS (Continued)

To implement the program, JCLEC will collaborate with Pusdik Reskrim (crime investigation training centre of Indonesian Police) in Bogor and Pusdik Intel (Intelligence Training Centre of Indonesian Police) in Bandung.

NUFFIC has agreed to support JCLEC with an indicative maximum budget up to amount of EUR 1,500,000.

7. SUBSEQUENT EVENT

On January 28, 2016, Brigadier General Soepartwi submitted a letter regarding submission of Chairman of Board of Management of JCLECF to Commissioner Pol. Drs. Mohammad Safei, SH, MH.

Mutation of this position based on decision letter of Head of Indonesian National Police: ST / 2718 / XII / 2015 dated December 31, 2015 regarding mutation of Kaditlatsusjatrans of Indonesian National Police.

Handover of had been held on January 27, 2016.

8. APPROVAL OF FINANCIAL STATEMENTS ISSUANCE

The financial statements on pages 1 to 12 were approved by the Executive Director Program and authorized to be issued on February 16, 2016.

Catatan Atas Laporan Keuangan – Basis Kas

**JAKARTA CENTRE FOR LAW
ENFORCEMENT COOPERATION
FOUNDATION**

**Untuk Tahun Yang Berakhir Tanggal
31 Desember 2015**

6. PERJANJIAN PENTING (Lanjutan)

Untuk melaksanakan program tersebut, JCLEC akan bekerja sama dengan Pusat Pendidikan Reserse dan Kriminal (Pusdik Reskrim) di Bogor dan Pusat Pendidikan Intelijen (Pusdik Intel) Polisi Republik Indonesia di Bandung.

NUFFIC setuju untuk memberikan bantuan sampai maksimal anggaran sebesar EUR 1.500.000.

7. PERISTIWA SETELAH TANGGAL LAPORAN

Pada tanggal 28 Januari 2016, Brigadir Jenderal Polisi Soepartwi menyampaikan surat penyerahan jabatan Ketua Dewan Pengurus kepada Kombes Pol. Drs. Mohammad Safei, SH, MH.

Penyerahan jabatan ini berdasarkan Surat Keputusan Kapolri: ST/2718/XII/2015 tanggal 31 Desember 2015 tentang mutasi jabatan Kaditlatsusjatrans Lemdiklat Polri.

Serah terima jabatan telah dilakukan pada tanggal 27 Januari 2016.

8. PERSETUJUAN PENERBITAN LAPORAN KEUANGAN

Laporan keuangan pada halaman 1 hingga 12 disetujui oleh Direktur Eksekutif Program untuk diterbitkan pada tanggal 16 Februari 2016.

JCLEC CONTACT DETAILS

JCLEC Training Centre, Semarang

Jalan Beladiri No. 1 Police Academy Complex

Sultan Agung, Candi Baru

Semarang 50232

Indonesia

Telephone: +62 24 8504009

Fax: +62 24 8504060

E-mail: admin@jclec.com / program@jclec.com

Website: www.jclec.com

JCLEC Secretariat, Jakarta

Jakarta Centre for Law Enforcement Cooperation

TNCC Building 12th Floor, Mabes Polri

Jalan Trunojoyo No.3 Kebayoran Baru

Jakarta Selatan 12110

Indonesia

Telephone: +62 21 7260622

Fax: +62 21 7260644

E-mail: admin@jclec.com / program@jclec.com

Website: www.jclec.com